



COMING SOON!

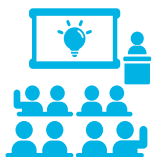
Miami Southridge Sr. High is becoming a Community Partnership School!

What Makes A Community Partnership School At Miami Southridge Sr. High Special?

- Health and wellness services will be available to students
- Students will have access to healthy foods
- Help with school work will be available to students
- We want you to continue to shape the Miami Southridge Sr. High community

Each Community Partnership School Focuses on Four Pillars:

- ★ **Health and Wellness**
Students can get a range of health and social services at school.
- ★ **Expanded Learning**
Help with school work, as well as additional learning opportunities, will be available outside regular school hours.
- ★ **Family & Community Engagement:** Families and the community are partners in their children’s education. The school is the neighborhood center where both parents and students learn and grow.
- ★ **Collaborative Leadership:** A culture of teamwork where parents and the community help the school meet the needs of both students and the community.



Improved student attendance



Improved student behavior



Improved student health



Improved academic performance

FOR MORE INFORMATION CONTACT JUAN AMADOR, COMMUNITY PARTNERSHIP SCHOOL DIRECTOR, AT JUAN. AMADOR@CHSFL.ORG

CHSFL.ORG/COMMUNITYPARTNERSHIPSCHOOLS

Miami Southridge Sr. High, A Community Partnership School is a partnership among:

