

Mort Elementary, A Community Partnership School

At Mort Elementary, A Community Partnership School our goal is to empower children and families to succeed.



Leading Students to Success

At Mort Elementary School, programs and services available to students build on daily classroom learning, and include the following:

- Tutoring and mentoring programs
- On-site counseling and case management services
- Before- and after-school services
- On-site support services
- Food and clothing pantry

Serving Families

At Mort Elementary, we offer something no other school has in the community: A Parent Resource Center, which allows you to play an active role in your child's education.

Here, you will find a welcoming environment where you can access valuable resources and opportunities.

- Parent Education Classes
- Career building support
- On-site support services
- Food and clothing pantry

2018-2019 AT A GLANCE

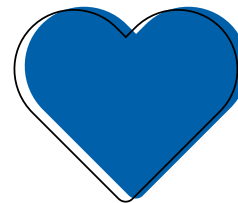
HEALTH & WELLNESS



30 STUDENTS RECEIVED VISION SERVICES



78 STUDENTS RECEIVED DENTAL SERVICES



52 STUDENTS RECEIVED MENTAL HEALTH COUNSELING

EDUCATION



102,390 HOURS OF ACADEMIC ENRICHMENT/TUTORING



50,890 HOURS OF STUDENT PARTICIPATION IN ENRICHMENT ACTIVITIES

For more information, please contact Kylia Carswell, Community Partnership School Director, at Kylia.Carswell@chsfl.org or 813-975-7373.

WWW.CHSFL.ORG/SCHOOLS/MORT

Mort Elementary, A Community Partnership School is a partnership among Children's Home Society of Florida, Potential Unleashed, the School District of Hillsborough County, Tampa Family Health, University Area Community Development Corporation and the University of South Florida.



Mort Elementary School, Community Partnership School



The Challenge

Thousands of students attending Title I schools arrive with heavy baggage: **hunger, homelessness, poverty, violence, mental health struggles, illness and more.** They carry so much weight that they simply cannot focus on their education.

The Solution: Community Partnership Schools

Community Partnership Schools provide support, services and solutions to help alleviate these burdens. As more weight is lifted, students find the balance to focus on learning so they can realize their full potential. Community Partnership Schools also engage parents and the community to empower students and families to succeed.

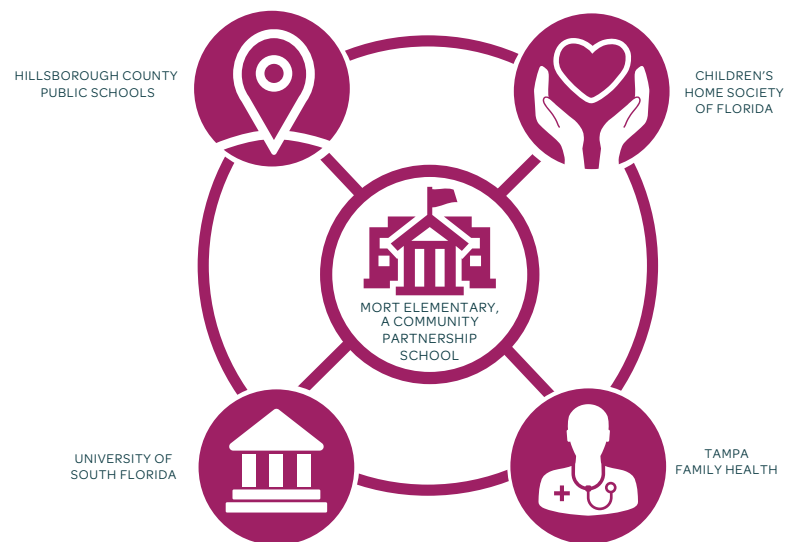
The core of every Community Partnership School is a strong foundation:

4 or more core partners: School district, reputable nonprofit like CHS, healthcare provider, college or university.

Long-term commitment: Partners make a 25-year (or longer) commitment.

Shared decision-making: Governed by a council of representatives from each partner organization, school leadership and community members to make decisions about funding, allocating resources, services and more.

Leveraged resources: Community Partnership Schools identify and coordinate local providers that can offer academic support programs, enrichment activities and wellness services at the school. **For every \$1 spent to operate the Community Partnership School, partners bring an average of \$3 of additional resources to the school.** By blending and braiding funding from multiple sectors (health, education, human services), we create opportunities in the school and surrounding community to remove barriers to learning and success.



Each Community Partnership School focuses on four pillars:

- ★ **Expanded learning:** Academic support and enrichment take place before and after school, during weekends and in the summer to augment traditional learning during the school day.
- ★ **Wellness supports:** A range of health and social services are accessible on the school campus.
- ★ **Family & community engagement:** Families and the community are partners in children's education, and the school becomes a neighborhood center offering enrichment opportunities for both students and adults.
- ★ **Collaborative leadership:** A culture of shared governance and collective decision-making advances a unified vision to identify needs and provide appropriate resources and solutions in the school and community.