



## Evans High School, A Community Partnership School

At Evans High School, A Community Partnership School our goal is to empower children and families to succeed.

### Leading Students to Success

At Evans High School, programs and services available to students build on daily classroom learning, and include the following:

- Tutoring
- Enrichment activities
- Summer programs
- Food programs
- Volunteerism services
- Mentoring
- Wellness services (medical, dental, vision, counseling)

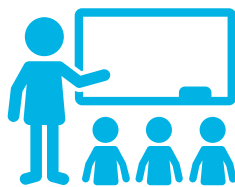
### Serving Families

At Evans High School, we offer something no other school has in the community: A full-time Parent Resource Center, which allows you to play an active role in your child's education. Here, you'll find a comfortable and welcoming environment featuring classes and events that offer opportunities to succeed. Parent services include:

- Education (GED, ESOL)
- Support groups
- Workshops
- Employment and job readiness
- Housing Resources
- Computer access and resources
- Applications for government assistance

### During the 2018-19 school year:

The percentage of students with no suspensions increased from **82.1%** to **85.3%**.



The percentage of students showing proficiency in **FSA MATH** increased from **19.3%** to **27%**.

Since becoming a Community Partnership School, the graduation rate has increased from **83.5%** to **88.1%**.

**83.5%** → **88.1%**

For more information, please contact Curtesa Vanderpool, Community Partnership School Director, at 904-547-8610 or [Curtesa.Vanderpool@chsfl.org](mailto:Curtesa.Vanderpool@chsfl.org).

[WWW.CHSFL.ORG/SCHOOLS/EVANS](http://WWW.CHSFL.ORG/SCHOOLS/EVANS)

Evans High School, A Community Partnership School is a partnership among Children's Home Society of Florida, Orange Blossom Family Health, Orange County Public Schools and the University of Central Florida.



UNIVERSITY OF CENTRAL FLORIDA

## Community Partnership Schools



### The Challenge

Thousands of students attending Title I schools arrive with heavy baggage: **hunger, homelessness, poverty, violence, mental health struggles, illness and more.** **They carry so much weight that they simply cannot focus on their education.**

### The Solution: Community Partnership Schools

Community Partnership Schools provide support, services and solutions to help alleviate these burdens. As more weight is lifted, students find the balance to focus on learning so they can realize their full potential. Community Partnership Schools also engage parents and the community to empower students and families to succeed.

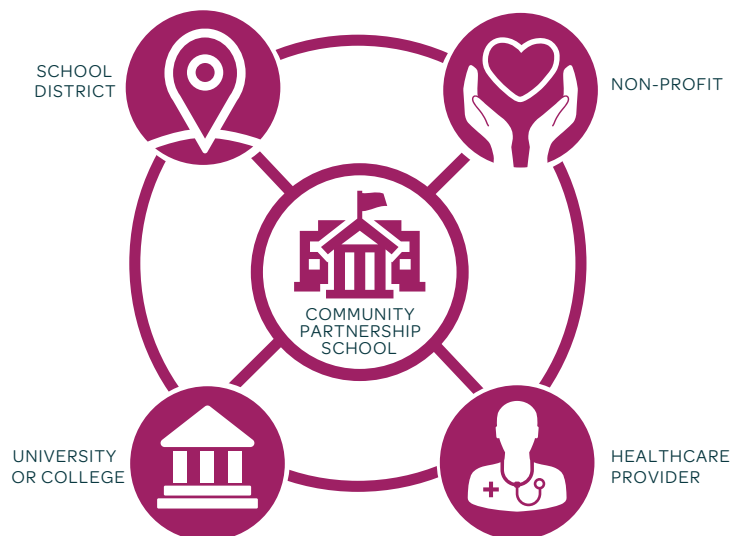
#### The core of every Community Partnership School is a strong foundation:

**4 or more core partners:** School district, reputable nonprofit like CHS, healthcare provider, college or university.

**Long-term commitment:** Partners make a 25-year (or longer) commitment.

**Shared decision-making:** Governed by a council of representatives from each partner organization, school leadership and community members to make decisions about funding, allocating resources, services and more.

**Leveraged resources:** Community Partnership Schools identify and coordinate local providers that can offer academic support programs, enrichment activities and wellness services at the school. **For every \$1 spent to operate the Community Partnership School, partners bring an average of \$3 of additional resources to the school.** By blending and braiding funding from multiple sectors (health, education, human services), we create opportunities in the school and surrounding community to remove barriers to learning and success.



#### Each Community Partnership School focuses on four pillars:

- ★ **Expanded learning:** Academic support and enrichment take place before and after school, during weekends and in the summer to augment traditional learning during the school day.
- ★ **Wellness supports:** A range of health and social services are accessible on the school campus.
- ★ **Family & community engagement:** Families and the community are partners in children's education, and the school becomes a neighborhood center offering enrichment opportunities for both students and adults.
- ★ **Collaborative leadership:** A culture of shared governance and collective decision-making advances a unified vision to identify needs and provide appropriate resources and solutions in the school and community.