





Contents

Breaking the cycle.....	2
Healing the pain.....	4
Finding a family.....	6
Successful transitions.....	8
Financial year in review 2013-2014.....	10
From the Chair.....	12
State Board of Directors.....	13
From the President.....	14
Management Team.....	15
Our history.....	16
Locations.....	18
Executive Directors.....	19
Contributors 2013-2014.....	20

Children's Home Society of Florida is a beacon of hope for abused, abandoned and neglected children and youth and for families wanting to thrive. Throughout the state, our 1,900 team members work to **break the tragic generational cycle of abuse** for more children, to **heal the pain** for children who've already suffered, to **find families for children** who can never return home and to **prepare teenagers for successful transitions** when they would otherwise face adulthood alone. As a state and national leader in child welfare, we strive to ensure more children have opportunities to grow up safe, healthy and prepared for life.

Total children and family members served in 2013-2014..... 88,175

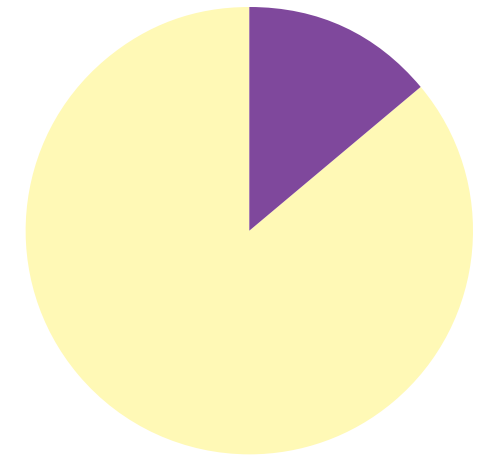


Breaking the cycle

In pursuit of our ambitious goal to prevent more children from ever suffering the tragedies of abuse, neglect or abandonment, Children's Home Society of Florida works closely with families to break generational cycles of abuse and neglect for increasing numbers of children. Through parent education, counseling, mentoring, in-home family-strengthening services, early education and care, and more, we encourage strong family relationships as we help parents learn to nurture their children to full potential. Moreover, we provide services and support for families with infants or toddlers who have disabilities or developmental delays, enhancing the child's development while sharing hope with the family.

Children and family members served.....24,035

Resources devoted to services that help break the cycle



Total resources devoted to services..... \$113.7 million

Resources devoted to children and families in services that help break the cycle..... \$16 million

A great investment at \$666 per client.

“Since Aiden was born, my life has changed in the best way possible. Just looking at his sweet little face makes everything worth it. He is my world ... my reason for getting out of bed in the morning.”

~Samantha

Samantha's story

Samantha's childhood could be described as violent. Frightening. Unstable.

Her dad, currently in prison for murder, was a drug-addicted alcoholic whose violent temper led to years of pain and suffering for Samantha and her mom.

“When he was home instead of in jail, he would throw my mom and me around and punch holes in the walls. I knew very early on that my dad was the opposite of what he was supposed to be,” Samantha says.

On a particularly violent night, Samantha's mom took her to her grandmother's house, and her father's fiery temper took over. That's when the police got involved.

“Dealing with my dad was the most difficult part of my childhood,” Samantha says. “I knew when I had children, I wanted to raise them different than the way I was raised.”

Little did she know how soon that day would come.

At the vulnerable age of 14, Samantha suspected she might be pregnant. Her boyfriend didn't believe her, and, days later, she learned of his infidelity. She fell into depression and contemplated suicide. But when a pregnancy test confirmed her suspicions, she knew she wanted to have her baby.

“My child saved my life,” Samantha says. “I literally wouldn't be here today if it weren't for him.”

Still, being a pregnant teen was far from easy.

“Everyone in middle school found out I was pregnant, and I couldn't deal with it anymore so I dropped out,” Samantha admits.

She felt scared and confused until she found Children's Home Society of Florida.

“With Children's Home Society of Florida, I knew I would learn how to parent, and I could meet other people going through the same thing,” Samantha says.

She learned parenting skills, received clothes for her baby, made friends, and prepared for the birthing process and for her son to come home.

She also formed strong bonds with Children's Home Society of Florida staff.

“She is just there for you,” Samantha says of the program's director. “She's the sweetest person you could ever ask for ... from the moment you walk in the door until the moment you leave, she's there to help you.”

Samantha knew she wasn't alone. She knew she could count on Children's Home Society of Florida.

Because of everything she's learned, she can offer her son guidance, stability and, most importantly, lots of love.

Now 18, she is back in school and studying hard to graduate so she can provide the best life she can for her child. After graduation, she plans to attend college to be an ultrasound technician. Seeing her son for the first time was incredibly special for Samantha, and she wants to help others experience such joy.



“I wouldn’t have gotten the help I needed if it weren’t for Children’s Home Society of Florida. They’ve given me hope, which I never thought would be possible. Having hope makes me feel like I have a purpose.”

~Jennifer

Jennifer’s story

When you first meet Jennifer, she seems like a typical teenager. She likes music, being creative, God, watching scary movies and learning about history.

But when you look closely, you can see the sadness in her eyes. Sadness caused by more than five years of abuse by her own father, someone supposed to love and protect her. Instead, he chose to abuse drugs and alcohol and then his little girl.

Jennifer recalls the first time her innocence was stolen. She was 6.

“The first time he molested me was when I was the most afraid,” Jennifer says solemnly. “I still remember the time on the clock. It was 11:46 at night.”

Jennifer suffered in silence for years.

When she was 11, she finally built up the courage to tell her mom. That night, Jennifer moved in with her grandmother, and her mom called the cops to file a restraining order against her dad.

“When I moved in with my grandmother, I still didn’t feel safe,” Jennifer says. “I always thought he would come find me because he knew where I was. Every time a green car would pass by my grandmother’s house, I would always think, ‘This is it ... he’s found me!’”

She felt as though she couldn’t escape him.

For a while, Jennifer turned to drugs, alcohol and self-harm to numb the pain and cope with her feelings. Until a friend asked her to church. That day, Jennifer found strength in her faith and everything changed.

Healing the pain

Children’s Home Society of Florida provides safety, healing and hope for children who’ve suffered the agonies of abuse, neglect or abandonment. Some children, victimized by their own parents, find protection and security in our emergency shelters or group homes. Others join loving foster families and, for the first time, find acceptance and encouragement as they work to overcome the traumas they’ve endured. For those who have run away from home, we reach out with understanding and help; moreover, we strive to reach youth before they run away, offering alternatives and guidance to adolescents struggling with difficulties at home. We also provide individual and family counseling and support to families facing crises so parents and children can work through and find appropriate ways of coping with stress, anger, discipline, depression, and other feelings and situations. Working closely with the entire family, we help strengthen bonds and build trust necessary to overcome challenges.

Children and family members served.....40,921

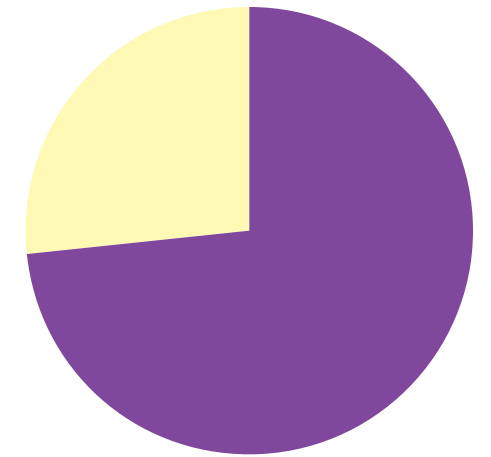
Jennifer became more open to receiving help, support and guidance. She found all that and more at Children’s Home Society of Florida.

“Elaine, my case manager, is very compassionate, and I feel like I can tell her anything,” Jennifer says. “She helped me open up and begin to let others in.”

Since coming to Children’s Home Society of Florida, Jennifer’s made tremendous strides in learning to identify and confront her emotions. And she’s been clean for more than eight months.

“I wouldn’t have gotten the help I needed if it weren’t for Children’s Home Society of Florida,” Jennifer says. “They’ve given me hope, which I never thought would be possible. Having hope makes me feel like I have a purpose.”

Resources devoted to services that help heal the pain



Total resources devoted to services..... \$113.7 million

Resources devoted to children and families in services that help heal the pain.....\$83.5 million

A worthy investment at \$2,042 per client.



Finding a family

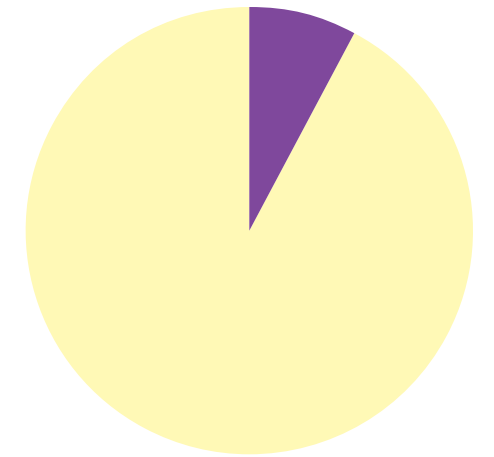
With our rich history in working with birth and adoptive parents, Children's Home Society of Florida has earned the reputation of Florida's most trusted adoption organization. Guided by our belief in finding parents for children – not children for parents – we find forever families for children through private domestic, international and public/foster care adoption. Well known for our private infant adoption services, we are the only adoption provider in the state that promises confidential lifetime maintenance of adoption records, allowing birth parents and adult adoptees to access and update medical and background information and, if both parties consent, the opportunity to reunite. In addition to finding loving families for newborns, we find forever homes for children whose families can no longer safely care for them. We understand the unique personalities and special challenges of our children and bring them together with families eager to provide the stability and love they've longed for.

Finalized adoptions.....659

Finalized adoptions since 190240,709

Children and family members served..... 17,153

Resources devoted to services that help find families for children



Total resources devoted to services..... \$113.7 million

Resources devoted to children and families involved in adoption services \$9.6 million

A sound investment at \$562 per client.

“For us, adoption definitely means forever ... it means I will always love you and nothing can change that.”

~Carrie

Carrie and Andrew's family story

For as long as she can remember, Carrie has dreamt of becoming a mom, of providing a home to children in need.

“Before I was even married, I knew I wanted to adopt,” Carrie says. “I’ve always thought giving children a forever family would be a great way to grow my family.”

When Carrie and her now husband, Andrew, were dating, they discussed adoption and were excited about the idea. Andrew grew up as an only child and longed for a sibling to share in a strong bond. He envisioned having a large family, and adoption seemed like the perfect path.

Originally, they planned to have biological children and then adopt, but that changed after learning pregnancy could endanger Carrie's life. So they changed course and decided to move forward with adoption. Carrie tears up when she recalls the first time she met sweet 9-year-old Jahmai.

“I remember getting a call that there was a little boy who would be a perfect match for our family,” Carrie says. “We met him on a swing set at Children's Home Society of Florida, and it was love at first sight. When I saw him, I thought to myself, ‘This is it. I'm a mom!’”

It's been five years since she caught the first glimpse of her son, and it was such a powerful, life-changing experience that she still gets emotional remembering that moment of overwhelming love.

After adopting Jahmai, the couple still had so much joy and love in their hearts that they continued to grow their family.

“Jahmai was actually part of a sibling group,” Carrie explains. “He had a biological sister, Aniya, who became available for adoption. So we were not only lucky enough to get a daughter, but we were thrilled to reunite Jahmai and Aniya after so many years apart.”

The couple adopted Jahmai at 9, their oldest daughter, Aniya, at 12, Drew at 8 and Jeremiah when he was about to turn 3.

Focusing on their children's needs, Carrie also made the choice to home school.

“Our two older children – through no fault of their own – were behind in school,” Carrie says. “They were slipping through the cracks, so I decided to stay home with them. Now I home school all our children and it's nice to spend that time with them each day and really bond.”

Every day, the love in this home grows stronger.

“For us, adoption is very important,” Carrie beams. “We love working with Children's Home Society of Florida and adopting kids who really need us. But in our home, and in our family, we're now just kids and mom and dad. For us, adoption definitely means, forever ... it means ‘I will always love you and nothing can change that.’”

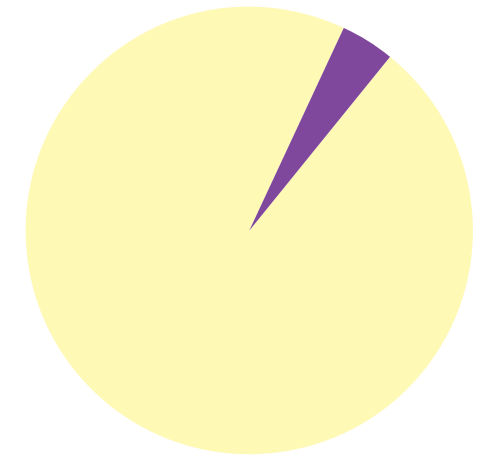


Successful transitions

Teenagers in foster care who haven't found forever families receive help to develop self-sufficiency, responsibility and opportunities for life success. As many of these teens would otherwise face adulthood alone, Children's Home Society of Florida provides life skills training, mentoring, educational and career coaching, and safe housing. For expectant and parenting teens, we also teach positive parenting so they may become healthy, independent families.

Children and family members served..... 6,066

Resources devoted to services that help teens successfully transition to adulthood



Total resources devoted to services..... \$113.7 million

Resources devoted to youth transitioning to adulthood..... \$4.5 million

A solid investment at \$741 per client.

“We didn’t really have the best background. My siblings and I were abused by our own parents ... the people who should love us the most.”

~Patricia

Patricia’s story

Patricia looks shyly toward the floor as she vividly recounts trauma she will never forget. At only 4 years old, she watched helplessly as her mom – diagnosed with schizophrenia – attempted to kill herself by drinking bleach.

But that experience – though life-changing – only scratches the surface of the series of traumatic events that make up Patricia’s tumultuous childhood.

Her father had deep anger and a hot temper, and her mother’s serious mental health issues bled into every aspect of family life. When Patricia was young, her parents punished her using anything they could find. Belts. Branches. Shoes. She grew up in fear of doing something that would lead to abuse.

Then the unfathomable happened. In a fit of violent rage, Patricia’s mom choked her sister. The children were immediately removed.

Instability at home led to years of involvement in the foster care system. Patricia and her siblings even admitted to the court that their parents were neglecting and abusing them, which was hard to say out loud.

“When I was in 7th grade, I started getting depressed,” Patricia admits. “I would say things like ... Why me ... why is my family like this.”

That’s when she decided she wanted something more and devoted her time to school.

By the time Patricia came to Children’s Home Society of Florida at 15, she was heading down a promising path but craved guidance as she neared adulthood. With help from Children’s Home Society of Florida, she learned how to make responsible decisions and get ready for her future as she took classes like budgeting and career preparation. She also enjoyed meeting influential people in the community who volunteered to share their knowledge and stories of career success.

With newfound confidence, Patricia started to come out of her shell. She ran for sophomore president. She played volleyball and basketball. She gave back to the community by volunteering to help others. Moreover, she attended the Florida Leadership Academy, where she met other teens in foster care.

She’s a Gift of Hope recipient, a 2014 Horatio Alger Scholar and a Jim Moran Scholar. A recent high school grad, she now attends Florida International University, where she plans to major in hospitality management and minor in business.

“I’m very proud of where I am now,” Patricia says.

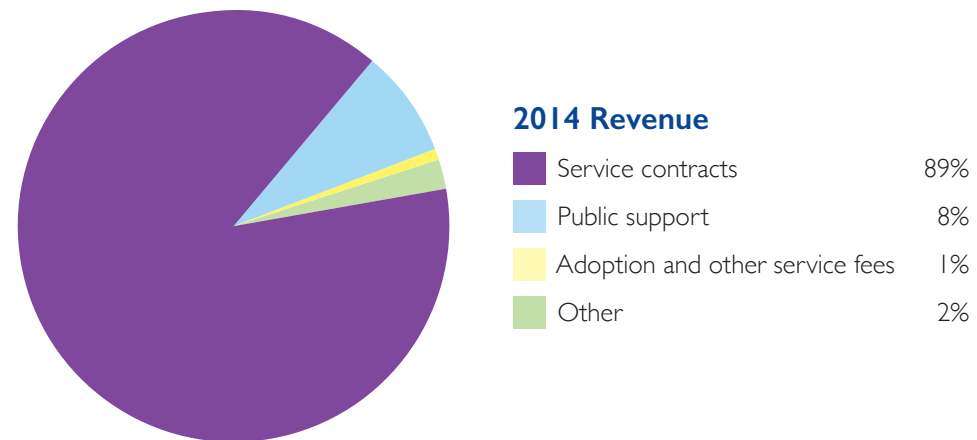
Patricia’s determination, coupled with the consistent guidance and compassionate support she received from Children’s Home Society of Florida, has taken her on a path filled with possibilities.

Financial year in review 2013-2014

Financial Summary

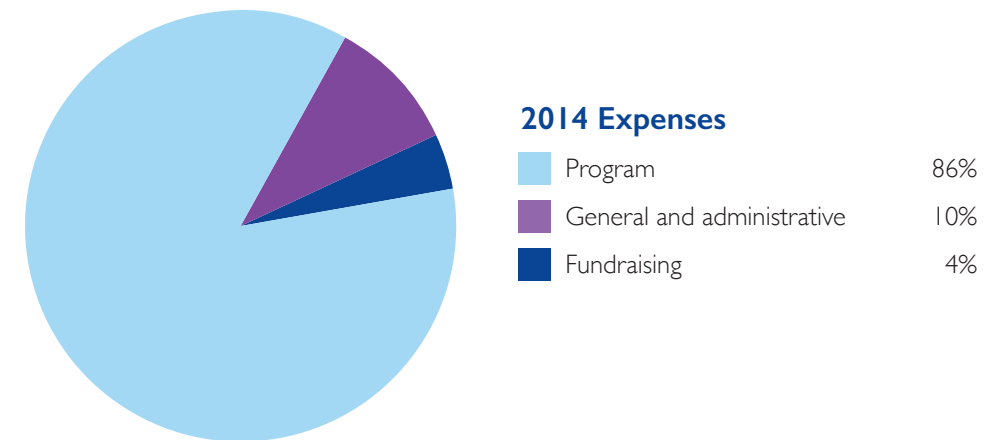
As of June 30, 2014 (dollars in thousands)

Statement of Financial Position		2014	2013
Assets	Cash and Cash Equivalents	8,744	7,827
	Accounts Receivable (net)	13,698	14,290
	Investments	11,691	9,953
	Beneficial Interests	22,167	18,736
	Property and Equipment (net)	35,991	36,496
	Other	2,368	2,412
	Total Assets	94,659	89,714
Liabilities	Current Liabilities	8,784	8,919
	Long-Term Liabilities	20,132	20,455
	Pension	8,931	10,416
	Total Liabilities	37,846	39,790
Net Assets	Unrestricted	34,645	30,600
	Temporarily Restricted	12,831	11,631
	Permanently Restricted	9,336	7,693
	Total Net Assets	56,812	49,924
Total Liabilities and Net Assets		94,659	89,714



Statement of Activities		2014	2013
Revenue	Service Contracts	100,849	97,709
	Public Support	9,659	9,768
	Adoption and Other Service Fees	1,203	1,261
	Other	2,075	2,384
	Total Support and Revenue	113,785	111,122
Expenses	Program	97,978	93,636
	General and Administrative	11,713	13,426
	Fundraising	4,005	3,981
	Total Expenses	113,696	111,043
Results from Operations		90	118
Other	Gains (Losses) on Sale of Property	(12)	(46)
	Investment Gains (Losses)	1,233	499
	Unrealized Gains (Losses) on Interest Rate Swap*	(17)	1,582
	Pension Adjustments	792	5,924
	Change in Beneficial Interests	4,803	2,250
	Change in Net Assets	6,889	10,326

*Children's Home Society of Florida entered into an interest rate swap agreement with Bank of America that fluctuates daily with long-term rates.



Financial results taken from audited financial statements, which contain an unqualified opinion. (McGladrey & Pullen, LLP)

A year of change

Message from the Chair



For years, Children's Home Society of Florida has pushed for dramatic changes in our child welfare system to better protect the safety and well-being of children. We endlessly champion legislation to improve the effectiveness of our system and to address challenges and obstacles it must overcome.

This year, an investigative series published by the Miami Herald highlighted critical issues that needed to be addressed in Florida's child welfare system. Consequently, the discussion of child welfare reform was catapulted into the public eye, making the crucial need to protect our children an elevated issue during the 2014 Legislative Session.

Our legislators shouldered the responsibility of creating fundamental changes to the system and began laying the groundwork to improve the way Florida protects the safety and well-being of vulnerable children.

Modifications were made to laws governing child welfare, and the legislature and governor allocated an additional \$38.8 million to the child protection system. Of that, \$21 million was directed to the Department of Children and Families and sheriff's offices to hire more child protective investigators who rescue children in danger.

Case management received \$10 million, earmarked for direct services (primarily prevention and family support programs) and the retention of case managers, which directly correlates with improved outcomes for children. Studies show that preventing the rate of case manager

turnover by just one during a child's involvement in the system can reduce by 17 percent that child's probability of being convicted of a crime and reduce by 21 percent the risk of that child becoming a teen parent.

Other additional funding was allotted to Healthy Families Florida, child protection teams and programs that serve child victims of sex trafficking.

Though the changes are in the right direction, they are merely the first steps in a series of substantial changes that must be made – including a major transformation to our system to place child safety and well-being as paramount. As leaders in child welfare, we look forward to collaborating with our partners to strategically drive the change needed to help more children grow up safe, healthy and prepared for life.

Protecting children, strengthening families and impacting communities throughout Florida is an immediate and critical need, and Children's Home Society of Florida will continue to step up to the challenge.

But we can't do it alone. Florida's children need us ... all of us. Children's Home Society of Florida vows to continue to take action to do what's best for kids. Will you join us?

Kind regards,

Marty Rubin

Martin "Marty" Rubin
Chair of the Board
2013-2014

State Board of Directors



Marty Rubin,
Chair 2013-2014
Smart City



Charles L. Cromer,
Vice Chair 2013-2014
Charles L. Cromer, CPA, PA



Richard "Dick" Adams, Jr.
Adams & Adams Law Firm



Alfredo Aguirre
Merrill Lynch



Samuel P. Bell, III
Pennington, Moore,
Wilkinson, Bell



Aaron Bosshardt
Bosshardt Realty
Services, LLC



Jacqueline Chang, Ph.D.
The Chang Group



Dan DiGiacomo
CAPTRUST Financial
Advisors



Jeff Gordon
Syniverse (retired)



Kent Guinn
Guinn Shields
and Company



Frank Gulisano
Summit Realty



Eric Jackson
Total Roof Solutions, Inc.



Nancy Kline
Educational Consultant



Laura Kolkman
Mosaica Partners



Larisa Perry
Wells Fargo Bank, N.A.



Cindy Pullen
Retired, Xerox Corporation



Katrina Rolle
Attorney and Community
Leader



Valerie Seidel
The Balmoral Group



Jalal "Jay" Shehadeh
Jay Shehadeh, PA.



Miguel Viyella
Wells Fargo Advisors, LLC



Victoria Weber
Hopping, Green & Sams



Together, we create tremendous change

Message from the President



During my 26-year tenure at Children's Home Society of Florida, I've had the honor of leading passionate team members and the privilege of working with exceptional university, health care, nonprofit and for-profit partners, all of whom share a dedication to improve the lives of Florida's children and families.

While we must never lose our ambitious drive to better protect children, it's important to reflect on how far we've come. Perhaps most illustrative of our advancement is Florida's dramatic shift to a privatized child welfare system. Prior to this movement – of which Children's Home Society of Florida played a key leadership role – nearly 50,000 children were in the state-run foster care system, caseloads were unmanageably high and, tragically, children even went missing. Since the transition to privatized community-based care, the number of children in the foster care system has dropped by nearly 30,000. Caseloads have been cut in half. Quality has improved. Children have become safer. More families have been able to come back together – or stay together – safely. And adoptions have increased exponentially.

But we are driven to do more.

While child safety and well-being remain our top priorities, we know several factors affect both: health, employment, education, stability, relationships.

A few years ago, we celebrated the opening of Evans Community School, a collaborative strategy made possible through our partnerships with Orange County Public Schools, the University

of Central Florida and Central Florida Family Health Center. Serving a too-often forgotten community, this initiative brings together medical and dental services, counseling, academic services, enrichment and after-school activities, leadership and mentoring opportunities, and more – all within the "safe zone" of the school.

And just this past year, we took our responsibility one step further by partnering with WellCare to launch the Pine Hills Wellness Program, which helps members of one of the state's most impoverished communities learn how to lead healthy lives. Guided by our compassionate community health workers, parents and caregivers learn how to navigate and trust the health care system. Moreover, they become empowered to make healthy decisions, from nutrition to lifestyle choices.

While we celebrate the impact we've had on Florida's children and families, we know there is still a long road ahead. Yet, with the unwavering commitment of Children's Home Society of Florida, I'm confident positive change will continue to happen for our children, our families and our communities.

Warm regards,

David A. Bundy
President and CEO
Children's Home Society of Florida
2000-2014

Note: David A. Bundy served as President and CEO from 2000 until his retirement July 1, 2014.

Management Team



David A. Bundy
President and Chief Executive Officer
2000-2014



Michael J. Shaver
President and Chief Executive Officer



Shelley S. Katz
Chief Operating Officer



Robert J. Wydra
Chief Financial Officer



Andry E. Sweet
Chief Strategy Officer



Anthony K. Sudler
Chief Philanthropy Officer



Dean A. Armitage
Vice President/Chief Information Officer



Stephen F. Bardy
Vice President of Operations - South



Amy L. Thomas
Vice President of Operations - North



Joan P. Hughes
Vice President of Administration



Summer J. Pfeiffer
Vice President of Governmental Relations



Frank D. Gonzalez
Vice President of Quality Management and Compliance and General Counsel



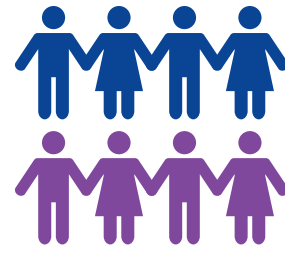
Our history



Between 1854 and 1929, it is estimated that between 150,000 and 200,000 children – most of whom carried only a single cardboard suitcase with their belongings – boarded orphan trains in the Northeast.¹ Frightened and alone, these children traveled to rural cities where they were put up on display, and the lucky ones were adopted. Those who weren't selected loaded back onto the trains to travel to the next city.



For more than 400 children, the last stop was Jacksonville. But not all the children who stepped off the train found homes. Fortunately, compassionate community leaders refused to leave them on the streets. And, under the guidance of Rev. D.W. Comstock, **Children's Home Society of Florida opened our doors on November 17, 1902**, to these abandoned children.



34

children were cared for by Children's Home Society of Florida in 1902.



In honor of our 20th Anniversary, we received **\$95,000** in donations.

“Christmas 1960 will have added meaning for us – and especially added love – because of Matthew, who came to our family via Children's Home Society of Florida.”

~ Excerpt from a letter from an adoptive family.



1,708

children received services in 1963



235

children were placed in forever homes between 1902 and 1910 by Children's Home Society of Florida.



In 1912, our total cost to operate the Receiving Home was \$10,581.



In 1980, one school-age girl in 10 became pregnant. More than

1,000

teenage parents sought help from Children's Home Society of Florida.

“I became interested in the work of Children's Home Society of Florida because they are national leaders in helping homeless youngsters.”

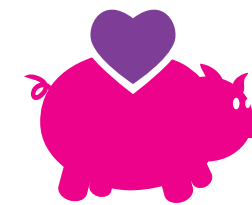
~ Dave Thomas, 1982



By 1994, Children's Home Society of Florida had found homes for more than

28,000

children.



In 2006, **4245 volunteers** donated **82,501 volunteer hours** = **\$1,488,318** in volunteer time.

88,000+

lives changed by Children's Home Society of Florida in 2014.



344

children were cared for by Children's Home Society of Florida in 1911.



= 175

1914: in 90 days, 175 homeless children were referred to Children's Home Society of Florida.

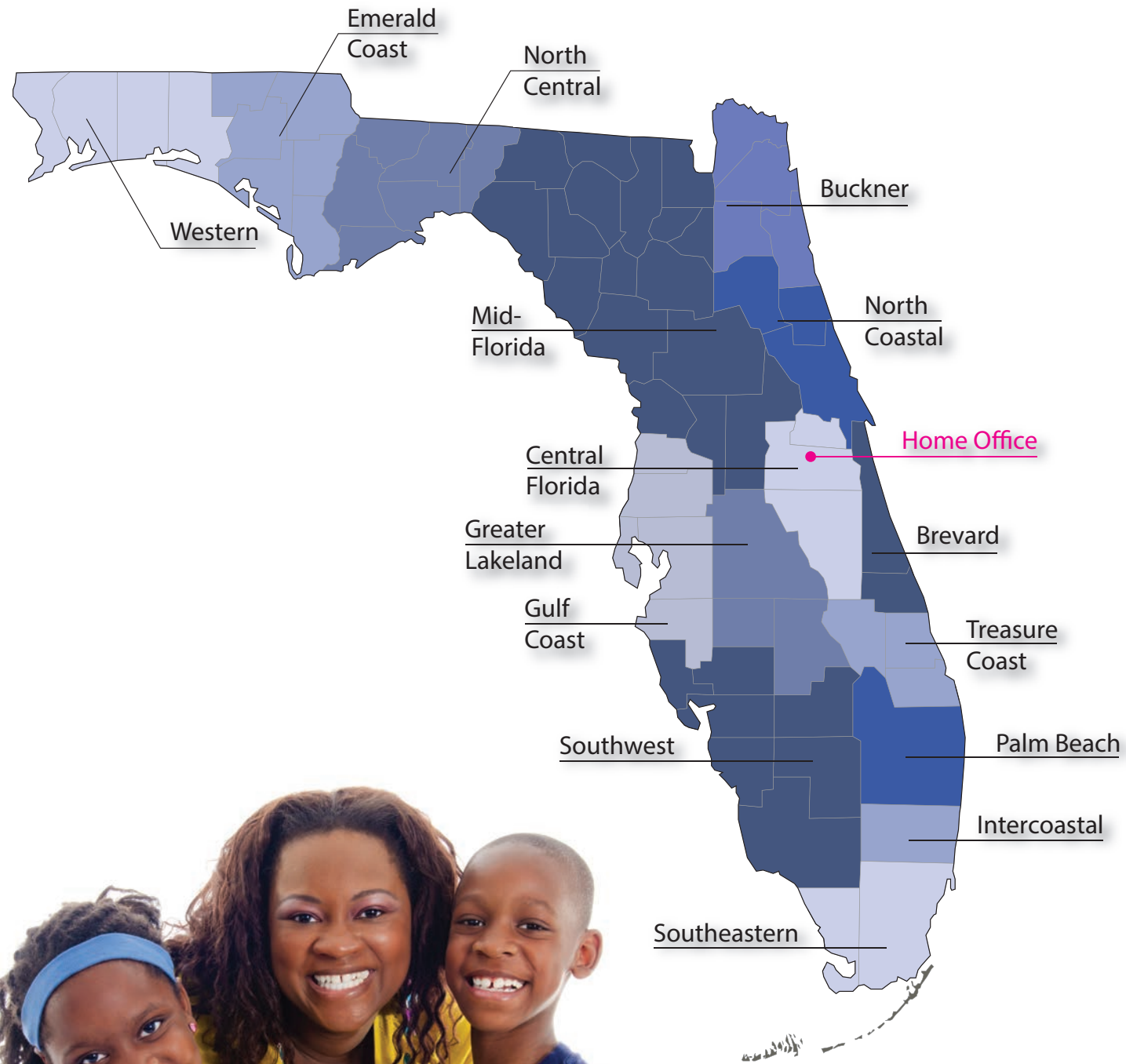
“Lasting solutions to social challenges are best created when organizations work together to achieve goals that will have dramatic, lifetime impacts on those we serve. Children's Home Society of Florida is already way ahead in shaping the way we care for children and families.”

~ Michael J. Shaver, Children's Home Society of Florida CEO, 2014

¹http://www.kanoll.org/articles/orphans/or_hist.htm

Locations

With 15 branches and nearly 100 locations, Children's Home Society of Florida's 1,900 team members serve children and families throughout the state.



Executive Directors



Tim Putman
Western
1300 N. Palafox Street
Suite 103
Pensacola, FL 32501
(850) 266-2700



Sean Golder
Executive Director
Emerald Coast
914 Harrison Avenue
Panama City, FL 32401
(850) 747-5411



Charles McDonald
North Central
1801 Miccosukee Commons Drive
Tallahassee, FL 32308
(850) 921-0772



Jennifer Anchors
Mid-Florida
711 NW First Street
Gainesville, FL 32601
(352) 334-0955



Kimberly Cook
Buckner
3027 San Diego Road
Jacksonville, FL 32207
(904) 493-7744



Tara Hormell
Central Florida
1485 S. Semoran Boulevard
Suite 1402
Winter Park, FL 32792
(321) 397-3000



Kimberly Pleasants
North Coastal
2400 S. Ridgewood Avenue
Suite 32
South Daytona, FL 32119
(386) 304-7600



Eliza McCall-Horne
Greater Lakeland
1010 E. Rose Street
Lakeland, FL 33801
(863) 413-3126



Kathleen "Kitty" Walsh
Gulf Coast
1515 Michelin Court
Lutz, FL 33549
(813) 949-8946



Teresa Miles
Brevard
326 Croton Road
Melbourne, FL 32935
(321) 752-3170



Sabrina Barnes
Treasure Coast
650 10th Street
Vero Beach, FL 32960
(772) 344-4020



Julie DeMar
Palm Beach
3333 Forest Hill Blvd.
West Palm Beach, FL 33406
(561) 868-4300



Rebecca McGuire
Southeastern
800 NW 15th Street
Miami, FL 33136
(305) 755-6500



Stephen Bardy,
Vice President of Operations
Southwest and Intercoastal
Southwest 1940 Maravilla Ave.
Fort Myers, FL 33901
(239) 334-0222
Intercoastal 401 NE 4th St.
Fort Lauderdale, FL 33301
(954) 453-6400

Contributors 2013-2014

\$50,000 and above cumulative givers

We extend heartfelt thanks to our faithful supporters who have generously and consistently donated to Children's Home Society of Florida and/or the Children's Home Society of Florida Foundation over the years. The following individuals, corporations and foundations generously donated between July 1, 2013, and June 30, 2014, adding to their cumulative totals of \$50,000 or more throughout the years. Your ongoing kindness enables us to continually serve Florida's children.

Acosta Sales and Marketing Company, Inc.
 Adecco North America
 Akerman LLP
 Alhadeff & Sitterson, P.A.
 Anonymous (12)
 Mrs. Elliot Baines
 Mr. and Mrs. David A. Baker
 George M. Baldwin Foundation
 Kyle and Chuck Ball
 The Betty and Leo Balzereit Foundation
 Bank of America
 Bank of America Charitable Foundation
 Bank of America United Way Campaign
 J. H. Baroco Foundation, Inc.
 John E. and Nellie J. Bastien Memorial Foundation
 The Batchelor Foundation, Inc.
 Mr. and Mrs. William Becker
 Julia B. Beensen Trust
 James Ford Bell Foundation
 Bingo Paradise, Inc.
 Dr. and Mrs. William Blackburn
 BMO Private Bank
 Brown Helicopter, Inc.
 Carnival Cruise Lines
 Mr. and Mrs. John S. Carr
 CFL Pizza Hut
 Central Florida Association for Women Lawyers
 The Chadbourne Foundation
 Charles A. Lauffer Trust
 Children's Home Society of Florida Foundation
 Children's Home Society of Florida Gainesville Auxiliary - Mid-Florida Division
 The Francis and Miranda Childress Foundation, Inc.
 Myra C. Christy Trust
 The Church of Bethesda-by-the-Sea
 Sidney and Alma Coates Trust
 The Community Foundation for Northeast Florida
 Community Foundation of Broward
 Mr. and Mrs. Jeff Condello
 Payson E. Crissey Trust
 CSX Transportation
 Curtis Family Foundation, Inc.

Ned and Sherry Ann Dayton
 Mr. Lynn and Mrs. Delores Drayton
 Alfred I. duPont Foundation
 Jessie Ball duPont Fund
 Mr. and Mrs. Peter A. Dupuis
 Mr. and Mrs. Edward C. Dweck
 William K. and Ann M. Eckerd Foundation
 Eisman & Russo, Inc.
 Mr. Jeffrey Faine
 Michael and Annie Falk Foundation
 Luke and Nancy Fichthorn
 Mr. and Mrs. Michael W. Fisher
 City of Fort Myers
 Mr. and Mrs. Gary Frazier
 Dr. Jim and Mrs. Carol Free
 The Mark and Mary Freitas Foundation
 Friends of Joshua House Foundation, Inc.
 Myrna H. Fux Charitable Lead Trust
 Gainesville Automotive
 The Galloway Foundation
 Joseph and Sherrie Garfield Charitable Foundation, Inc.
 Mr. and Mrs. Timothy B. Gaskin
 George E. Warren Corporation
 GFWC Florida for Hacienda Girls Ranch
 The Henry and Lucy Gooding Endowment
 K.W. Grader Foundation
 Greenberg Traurig, P.A.
 Ms. Michele M. Greene
 Greene-Hazel Insurance Group
 Mr. and Mrs. James R. Griffiths
 Carole and Frank Gulisano
 David C. Hammers
 HandsOn Jacksonville
 Health Foundation of South Florida, Inc.
 Heart of Florida United Way, Inc.
 Holland & Knight, LLP
 Bruce E. and Kathie Holmes
 Humana
 Mr. and Mrs. John L. Hundley
 Mr. and Mrs. James L. Hutchings
 Mr. and Mrs. Robert E. Jacoby
 Mr. and Mrs. Rajiv Jain
 Dr. Robert E. Jewett*
 John's Island Community Service League, Inc.
 Kappa Delta Sorority, Delta Eta Chapter

Kessler Family Charitable Fund
 Mr. and Mrs. Howard Kessler
 Kiwanis Club of Greater Brandon Foundation
 Mr. and Mrs. Rudy Kraft
 The Kugelman Foundation
 Ms. Rose La Femina and Mr. Michael Conroy
 Mrs. Edward Lane, Jr.
 James Annenberg La Vea Charitable Foundation
 Mr. and Mrs. Lewis S. Lee
 Mr. and Mrs. David K. Leininger
 Polly Annenberg Levee Charitable Trust
 The Limu Company
 Mr. and Mrs. Warren W. Lovell, III
 The Chesley G. Magruder Foundation, Inc.
 Mr. and Mrs. Paul Martin
 D.W. McMillan Foundation
 Michelin Golf Classic, Inc.
 The Martha G. Moore Foundation, Inc.
 The Ambrose Monell Foundation
 Mr. and Mrs. Robert M. Moser
 Estate of Mrs. Shirley Narcisenfeld
 Natural Life for Children, Inc.
 Orlando Magic Youth Fund, a McCormick Foundation Fund
 Panama City Parrot Head Club
 Panama City Toyota Scion
 Pandora's Annual Children's Invitational
 Panera Bread Operation Dough-Nation Donors
 Mr. Patrick M. Park and Ms. Nathalie Fernandez
 The Park Foundation
 Mr. and Mrs. James A. Patterson
 Mr. and Mrs. Maurice L. Pearson
 PGA TOUR, Inc.
 Mr. David L. Powell and Ms. Victoria L. Weber
 Publix Santa Dollars Customer Campaign
 Publix Super Markets Charities, Inc.
 Publix Super Markets, Inc.
 Mr. and Mrs. Martin A. Purcell
 Quail Valley Charities, Inc.
 Mr. Thomas C. Quick
 Mr. and Mrs. Roger R. Raepfle
 Randall Mechanical Incorporated

The Remember to Share Foundation
 Mr. Marty Rubin
 Mr. Barney S. Rush and Dr. Marjorie D. Shaw
 Scaife Family Foundation
 Mr. and Mrs. Robert A. Schneider
 Scramble for Kids
 Selders Foundation Trust
 Silver Coffee Committee
 SmartCity Telecom
 Society of the Debutante Charity Cotillion
 Southwest Florida Community Foundation, Inc.
 Stearns Weaver Miller Weissler Stein Mart, Inc.
 Stop Child Abuse License Plate Purchasers
 Sun Sentinel Children's Fund, a McCormick Foundation Fund
 SunTrust Banks, Inc.
 Carl S. Swisher Foundation
 Target
 Frank S. Taylor Trust
 Mrs. James S. Taylor
 Mrs. C. Herman Terry
 Dave Thomas Foundation for Adoption
 Mrs. I. Lorraine Thomas
 Mr. and Mrs. Hugh Thompson
 Mr. Charles and Mrs. Karen Throckmorton
 Treasure Coast Newspapers and the Scripps Howard Foundation
 Universal Orlando Foundation
 Mr. Miguel and Mrs. Sonia Viyella
 Diane Walder, M.D.
 Walmart Foundation
 Walmart Stores, Inc.
 Walt Disney World Resort, Community Relations
 The William R. Watts Foundation, Inc.
 WellCare Community Foundation
 Wells Fargo
 Estate of Ethel H. Williams
 Margaret McCartney and R. Parks Williams Foundation
 Wings of Hope Foundation
 Winn-Dixie
 Wycliffe Charities Foundation Inc.

\$1,000 and above multi-year supporters

We thank our generous contributors who have pledged a multi-year commitment of at least \$1,000 to help Florida's children and families. The following individuals, organizations, corporations and foundations are active supporters that have pledged multiple years of support to Children's Home Society of Florida and/or the Children's Home Society of Florida Foundation or made a gift toward an existing commitment during the fiscal year from July 1, 2013, through June 30, 2014.

ACE Bermuda Insurance, Ltd.
 Kyle and Chuck Ball
 The Balmoral Group
 Skip and Inga Bateman
 Mr. and Mrs. John Beck
 Dr. and Mrs. William Becker
 Mr. and Mrs. William Blackburn
 Mr. and Mrs. John L. Bogner
 Mr. and Mrs. Craig Castor
 Mr. and Mrs. Craig Caswell
 Mr. Andrew Chin
 Ms. Kamachie Chinapen
 Mr. Robert Clark
 Commissioner and Mrs. John Dailey
 Mr. and Mrs. Don Davis
 Mr. Jeff Doster
 Mr. and Mrs. David R. Dotherow

Mr. and Mrs. Helmuth L. Eidel
 Luke and Nancy Fichthorn
 Mr. and Mrs. Tom Forest
 Mr. and Mrs. Gary Frazier
 Ms. Janie L. Gould
 Mr. and Mrs. Carson Green
 Bruce E. and Kathie Holmes
 Ms. Mary Hurley
 IBM Employee Services Center
 JP Morgan Chase Foundation
 Matching Gifts Program
 JVD Construction
 Ms. Shelley S. Katz
 Ms. Juliana Kreul, CPA
 Mr. and Mrs. Aurel Lahaye
 Ms. Patricia Loy
 The Robert F. and

Eleonora W. McCabe Foundation
 Ms. Karen Moorefield
 Mr. and Mrs. Thomas Nelson
 Mr. Jack A. Olmstead
 OppenheimerFunds, Inc.
 Mrs. Larisa F. Perry
 Ms. Wendi W. Peterson
 Pools by Bradley
 Ms. Janet Rapp
 Mr. and Mrs. James A. Reese
 Mr. James R. Rychlicki
 Michael C. Sasso, P.A.
 Ms. Janet Schwartz
 Greg and Valerie Seidel
 Mr. and Mrs. Jeffrey D. Sharon
 Mr. and Mrs. Nevins C. Smith, Jr.
 Mr. and Mrs. Ben Subin

Ms. Andry E. Sweet and Mr. John B. Block
 Ms. Beverly B. Taylor
 Mrs. James S. Taylor
 Mr. and Mrs. Jeffrey Tecau
 Judge Brad Thomas and Ms. Susan Cox
 UBS Financial Services, Inc.
 Mr. Christopher Verlander
 Mr. and Mrs. Bruce C. Wardell
 Mr. Mike Welker
 Mr. and Mrs. Nevin L. Wertenberger, II
 Ms. Pam West
 Mr. and Mrs. Kevin Wydra
 Mr. Joseph A. Yarid*



*Deceased

Thank you to our 2013-2014 donors

We thank the following individuals, organizations, corporations and foundations for embracing our children by contributing \$1,000 or more to Children's Home Society of Florida and/or the Children's Home Society of Florida Foundation during the fiscal year from July 1, 2013, through June 30, 2014. With your help, we are changing lives and building stronger families in Florida.

\$250,000+

Anonymous
Estate of Mrs. Shirley Narcisenfeld

\$100,000 - \$249,999

The Batchelor Foundation, Inc.
Friends of Joshua House
Foundation, Inc.
Mrs. James S. Taylor

\$50,000 - \$99,999

Anonymous
CFL Pizza Hut
Mr. and Mrs. Jeff Condello
The Galloway Foundation
Mr. and Mrs. Rajiv Jain
James Annenberg LaVea Charitable
Foundation
Randall Mechanical Incorporated
Selders Foundation Trust
Stop Child Abuse License Plate
Purchasers
Dave Thomas Foundation for
Adoption
Mrs. I. Lorraine Thomas
WellCare Community Foundation

\$25,000 - \$49,999

Anonymous
Bank of America
Bank of America Charitable Foundation
BMO Private Bank
Brown Helicopter, Inc.
The Community Foundation for
Northeast Florida
Jessie Ball duPont Fund
Bernard A. Egan Foundation, Inc.
Joseph and Sherrie Garfield
Charitable Foundation, Inc.
Mr. and Mrs. Howard Kessler
The Kugelman Foundation
Charles A. Lauffer Trust
D.W. McMillan Foundation
Michelin Golf Classic, Inc.
The Ambrose Monell Foundation
Natural Life for Children, Inc.
Panama City Parrot Head Club
Panama City Toyota Scion
Pandora's Annual Children's Invitational
Panera Bread Operation
Dough-Nation Donors
Publix Super Markets, Inc.
Quail Valley Charities, Inc.
Quest Diagnostics
Mr. Marty Rubin
The Salah Foundation
Silver Coffee Committee
Sun Sentinel Children's Fund,
a McCormick Foundation Fund
Trax Capital Management
Wells Fargo
Wings of Hope Foundation

\$10,000 - \$24,999

Acosta Sales and Marketing
Company, Inc.
Akerman, LLP
American Traction Systems, Inc.
Anonymous (2)
AutoNation Acura Sanford
Mrs. Elliot Baines
George M. Baldwin Foundation
Kyle and Chuck Ball
The Betty and Leo Balzereit
Foundation
J. H. Baroco Foundation, Inc.
Mr. and Mrs. William Becker
Mr. Reid S. Berman
Bingo Paradise, Inc.
Mr. Eric R. Breen
Mr. and Mrs. Bruce Brown
Paula and Bob Butler
Mr. and Mrs. Gary Chartrand
Myra C. Christy Trust
City Kia of Greater Orlando
City National Bank
Coach Matching Gifts Program
Cox Communications
The Marvin H. Davidson
Foundation, Inc.
Mr. Lynn and Mrs. Delores Drayton
Mr. and Mrs. Peter A. Dupuis
Jess and Brewster J. Durkee Foundation
William K. and Ann M. Eckerd
Foundation
Eisman & Russo, Inc.
Michael and Annie Falk Foundation
The Father's Table Foundation
Fidelity Charitable Gift Fund
Employees of Fidelity National
Financial, Inc.
Mr. and Mrs. Gary Frazier
The Mark and Mary Freitas
Foundation
The Myrna H. Fux Charitable
Lead Trust
Gainesville Automotive
Mr. and Mrs. Timothy B. Gaskin
GFWC Florida for Hacienda
Girls Ranch
The Henry and Lucy Gooding
Endowment
The Grainger Foundation
Greenberg Traurig, P.A.
Mr. and Mrs. Robert D. Hiday
The Hill Family Foundation, Inc.

HMS Foundation Trust
Bruce E. and Kathie Holmes
W. Bradford Ingalls Charitable
Foundation
John's Island Community Service
League, Inc.
Kappa Delta Sorority,
Delta Eta Chapter
Kiwanis Club of Greater Brandon
Foundation
Michael and Monica Kott
LEGOLAND® Florida
The Limu Company
Mr. Daniel MacMillan
Mr. and Mrs. Stephen E. Myers
Mr. and Mrs. A. J. Nassar
Orlando Magic Youth Fund,
a McCormick Foundation Fund
Park Foundation, Inc.
The Park Foundation
Mr. and Mrs. James A. Patterson
PGA TOUR, Inc.
PNC Foundation
Publix Santa Dollars Customer
Campaign
Publix Super Markets Charities, Inc.
Mr. Thomas C. Quick
The Remember to Share Foundation
Scaduto Family Charitable Trust
Scaife Family Foundation
Mr. and Mrs. Robert A. Schneider
Scramble for Kids
SmartCity Telecom
Southwest Florida Community
Foundation, Inc.
SunTrust Banks, Inc.
Carl S. Swisher Foundation
Taste of Gainesville, Inc.
Mrs. C. Herman Terry
C. Herman and Mary Virginia Terry
Foundation
Toyota Dealer Match Program
Mr. Derek Trucks
Turner Foundation, Inc.
Universal Orlando Foundation
Walmart Foundation
Walmart Stores, Inc.
Walt Disney World Resort,
Community Relations
The William R. Watts Foundation, Inc.
Wells Fargo Foundation
Winter Park Construction
WriteSteps

\$5,000 - \$9,999

ACE Bermuda Insurance, Ltd.
Ms. Jennifer Adkins
All Saints Church of Winter Park
Anonymous (8)
Mr. and Mrs. Richard A. Ashley
AutoNation
AutoNation Honda Sanford
AutoNation Toyota Winter Park
Bank of America United Way
Campaign
Mr. and Mrs. Thomas Barclay
Mrs. Mary J. Bastian
Mr. and Mrs. Keith D. Beaty
Mr. and Mrs. John Beck
Bi-Lo Winn-Dixie Foundation
Margaret R. Binz Foundation, Inc.
Bissell Foundation
BJ's Charitable Foundation
BJ's Wholesale Club
Black Knight Cares Foundation
Dr. and Mrs. William Blackburn
Board of County Commissioners,
Brevard County
Mr. and Mrs. Stephen Broome
The Brumos Companies
Capital City Bank
Capital City Hyundai
Capital Regional Medical Center
Carnival Cruise Lines
Central Florida Association for
Women Lawyers
The Chadbourne Foundation
Chico's FAS, Inc.
The Francis and Miranda Childress
Foundation, Inc.
Circle Redmont, Inc.
Coldwell Banker
Coldwell Banker Residential
Real Estate Cares
Crane Rental Corporation of
Orlando, Inc.
Payson E. Crissey Trust
CSX Corporate Citizenship
CSX Foundation
CSX Transportation
Curtis Family Foundation, Inc.
Designer's Plumbing Studio, Inc.
Mr. and Mrs. Kevin M. Donovan
Douglas G. Halliday Foundation, Inc.
Alfred I. duPont Foundation
Mr. and Mrs. Edward C. Dweck
Mr. and Mrs. Andrew W. Edmonds
Mr. and Mrs. Helmuth L. Eidel
Enterprise Rent-A-Car
Mr. Reid E. Ewing

Raymond George and Ruth Bitner
Fisher Foundation
City of Fort Myers
Gaskin O'Leary Insurance
Mr. and Mrs. Trent Gavazzi
GE Capital Corp.
GE Money Americas
George E. Warren Corporation
Mr. John H. Gilmore, Jr.
Give with Liberty Employee
Donations, Liberty Mutual
Insurance Group
K.W. Grader Foundation
Grand Harbor Community Outreach
Program, Inc.
Guys with Ties, Inc.
Ms. Phyllis P. Haden
Mr. and Mrs. William R. Hardaker
The Henry Family Foundation/
Allen and Sandra Henry
Hopping Green & Sams, P.A.
Horizon Lines
Housewives of Central Florida
Partnership
Mr. and Mrs. John L. Hundley
Ms. Mary Hurley
Helen Ingham Foundation
International Assembly Specialists
Jacksonville Jaguars Foundation
Dr. Robert E. Jewett*
Just in Queso Foundation, Inc.
Just Kidding, LLC
Mr. and Mrs. James P. Kelly
Ms. Rose La Femina and
Mr. Michael Conroy
Mr. and Mrs. Aurel Lahaye
Frances Langford Foundation
Lefkowitz, Shaw & Sentner
Attorneys at Law
Mr. and Mrs. David K. Leininger
Mr. and Mrs. Howard Lester
Polly Annenberg Levee Charitable
Trust
Libby Romack, Benjamin F. Edwards
& Co.
Mr. and Mrs. H. William Lichtenberger
Linda A. Gary Real Estate, Inc.
Loli and the Bean, Inc.
Jean E. Loser Irrevocable Trust
The Chesley G. Magruder
Foundation, Inc.
Mainline Information Systems, Inc.
Marcum Foundation, Inc.
Mr. Kevin Mason
The Robert F. and Eleonora W.
McCabe Foundation

Mercedes-Benz of Coral Gables
Mercedes-Benz of Orlando in
Maitland
Miracle Strip at Pier Park
The Martha G. Moore Foundation, Inc.
Morgan Stanley Foundation
Multaply
Mr. Dennis Narlinger
Mr. James W. Neal
Mr. and Mrs. Harold A. Ofstie
The Oliver Family Foundation
Palm Beach Motor Cars
Panera Bread/Covelli Family Limited
Partnership
Mr. and Mrs. Maurice L. Pearson
Pen Air Federal Credit Union
Petway Family Foundation, Inc.
Pinch A Penny, Inc.
Pine Creek Sporting Club
Mr. Christopher W. Porter, Jr.
Mr. and Mrs. Harvey Prior
Mr. and Mrs. Phillip Pritchett
Pritchett Trucking, Inc.
Psychcare, LLC
Mr. and Mrs. Roger R. Raepple
Raymond James Financial
Dr. Garrison and Mrs. Katrina Rolle
Mr. and Mrs. Jerrold Rosenbaum
Ronnie and Jerrold Rosenbaum
Family Foundation, Inc.
The Ryan Family Foundation
Ryder Corporation
Schwab Charitable Fund
Ms. Cheryl Scully
SDC Construction

SED Children's Fund, Inc.
Mrs. Sunny Sessa
Mr. and Mrs. Jeffrey D. Sharon
Sihle Insurance Group, Inc.
Jay Stein Foundation Trust
Stein Mart, Inc.
Ms. Michele L. Stocker, Esq.
Ms. Darlene G. Strickland
Ms. Cynthia F. Sulzberger and
Mr. Steven Green
SunTrust Foundation
SunTrust United Way Campaign
Mr. and Mrs. Fred Tanne
Mr. Charles and
Mrs. Karen Throckmorton
Mr. and Mrs. William R. Tiefel
Tower Hill Insurance Group, LLC
Tower Realty Asset Management, Inc.
Trager Family Foundation, Inc.
Triad Financial Services, Inc.
University of Central Florida
Vantage Motorworks, Inc.
Mr. and Mrs. Charles Walgreen, III
Mr. and Mrs. Terry Washington
Wells Fargo Advisors, LLC
Whole Foods Market
Estate of Ethel H. Williams
Mr. Thomas C. Williams
Mr. and Mrs. Timothy A. Williams
Margaret McCartney and R. Parks
Williams Foundation
Winn-Dixie
Wycliffe Charities Foundation, Inc.
Mr. and Mrs. Kevin Wydra
Mr. and Mrs. Robert J. Wydra, Jr.
Mr. and Mrs. E. Richard Yulman



\$2,500 - \$4,999

Ace Construction
Aetna, Inc.
Age Society, LLC
Allen, Norton, & Blue, PA.
The Martin Andersen - Gracia
Andersen Foundation, Inc.
Edward and Jeanne André
Anonymous (7)
Arthrex, Inc.
Ashbrie Cinemas, Inc.
Austin, Bovay & Gillman, PA.
AutoNation Chevy Airport
AutoNation Chevy West Colonial
Avera & Smith, LLP
The Bank of New York Mellon
Banks Carroll Group at Morgan
Stanley
C. Kenneth and Laura Baxter
Foundation, Inc.
Bay Point Women's Club
Beasley & Henley Interior Design
Mr. and Mrs. Samuel P. Bell, III
Boos Development Group, Inc.
Mr. Aaron and
Mrs. Kimberly Bosshardt
Mr. Chad Bowling
Broward Health
Buigas & Associates, Inc.
John Gordon Bull Fund of the
Community Foundation
of Broward
Dr. and Mrs. Peter N. Butler
CAA Sports
CBS Radio Orlando
The Chandlery, Inc.
Dr. Jacqueline S. Chang
Mr. and Mrs. Harvey R. Chaplin
Child Advocacy Center, Inc.
CIN-Q Automobiles, Inc.
Citrus Health Network, Inc.
Collier County Bar Association
Community Foundation of Broward
Community Foundation of North
Central Florida
Mr. John Cooper
Corporate Air, Inc.
Mr. and Mrs. Joseph P. Corr
Mr. and Mrs. J. Benson Coulter, Jr.
Mr. Charles L. Cromer
Dale Sorensen Real Estate, Inc.
Ms. Melinda Dawson
The Dayton Foundation
Daytona 200 Motorcycle Club
Dealers Auto Auction, Inc.
Mr. Robert A. and
Mrs. Sharon Quinn Dixon
Dr. and Mrs. Jerry A. Dorsch
DuBow Family Foundation, Inc.
Ernst & Young US, LLP
Estate of Mrs. Leitha M. Evans
Mrs. Sharmini Everett
Exactech, Inc.
Mr. Jeffrey Faine
Fifth Third Bank

First Housing Foundation, Inc.
Florida Credit Union
Florida Hospital Memorial Medical
Center
The Mary Alice Fortin Foundation, Inc.
Mr. James R. Freney
Friends of Abused Children, Inc.
Gainesville Restoration &
Remodeling, Inc.
Mr. and Mrs. Bruce Gendelman
Mr. and Mrs. Burl F. George
Georgia Xpress Lubes, Inc.
Mr. Aaron Gorovitz
The Grand Theatre
Ms. Michele M. Greene
Greene-Hazel Insurance Group
The Greenhouse Church
Mr. Greg and Dr. Mary Grooms
Gulf Beach Construction, Inc.
Carole and Frank Gulisano

Mr. and Mrs. M. Richard Lewis, Jr.
Liberty Mutual Insurance Group
Mr. Walter E. Lieber
Mr. Bobby Lindsey
Lowndes, Drosdick, Doster,
Kantor & Reed, P.A.
Magic Transport, Inc. - Mr. and
Mrs. Carlos and Maribel Padiá
Mr. Morton Manassaram
Mr. and Mrs. Jim Mayes
Mr. and Mrs. Peter McCallan
MCCI Group Holdings, LLC
Evelyn V. McPherson Foundation
Mercedes-Benz of Fort Lauderdale
Merck Partnership for Giving
Merrill Lynch, Pierce, Fenner &
Smith, Inc.
Messiah Lutheran Church
Miami Parking Authority
Mr. and Mrs. Klein Miller

PNC Wealth Management
Ms. Paddy Potterfield
Mr. David L. Powell and
Ms. Victoria L. Weber
Raymond James & Associates, Inc.
Reunion Bank of Florida
Reynolds Family Foundation
Roads, Inc.
Bryan and Judy Roub
Royal Caribbean Cruises, Ltd.
Mr. John Rue
Rue, Ziffra & Caldwell, P.A.
Saltwater Grill
The Sansing Foundation, Inc.
Mr. Chris Schulte
Mr. and Mrs. Karl M. Schutzmann
Mr. and Mrs. David A. Schwedel
Shands Healthcare
Ms. Justine Simoni
Mr. and Mrs. John E. Slaughter, Jr.
Solomon Lodge No. 20 F&AM
Southland Construction, Inc.
Space Coast Cardiology/Dr. and
Mrs. Ravidan B. Palaniyandi
St. Margaret Mary Catholic Church
Stewart Evans Stewart & Emmons, PA.
Mr. Anthony K. Sudler
Mr. Bruce J. Sweeny
T&G Constructors
Tallahassee State Bank
Tampa L.B. Sales, Inc.
Target Stores
Taylor Family Foundation
Frank S. Taylor Trust
Mr. and Mrs. Bruce Thompson
Tidewater Jewish Foundation, Inc.
Treasure Coast Newspapers and
the Scripps Howard Foundation
Triage Management Services, Inc.
Mr. Victor G. Trivett
United Automobile Insurance
Company

US Bank
Mr. and Mrs. Leo Vecellio, Jr.
Mr. and Mrs. Michael Verra
Mr. Paul Viscomi
Mr. Miguel and Mrs. Sonnia Viyella
Mr. Ned A. Voska, II
Voya Foundation
Diane Walder, M.D.
Mr. and Mrs. Carl F. Walls
Mr. and Mrs. Patrick Walsh
Whole Foods Market - Jacksonville
Dr. Jack Widrich Foundation, Inc.
Williams Wholesale Seafood, Inc.
Mr. Scott H. Wilson, CPA
Winter Park Health Foundation
Mrs. Jennifer Wyatt
Mr. Robert N. Yarmuth
The Yaseen Family Foundation
Jerome A. Yavitz Charitable
Foundation, Inc.
YMCA-DeLand
Zen Fitness

\$1,000 - \$2,499

A Touch of Heart Foundation
Accent Foot Fashions, LLC
The Frank and Sunny Adams
Family Foundation
Aetna Foundation, Inc.
A-jax Company, Inc.
Dr. Rush Akin
Alarion Bank
Ms. Fran Allegra
Allen, Mooney & Barnes
Mr. Willard E. Allen, Jr.
Mr. and Mrs. A. Edward Allinson
Allstate Giving Campaign
American Endowment Foundation
American Express Charitable Fund
American Express Company
Employee Giving Program
Amerifactors Financial Group
Jennifer Anchors and Jeff Lamb
Anderson Columbia Co., Inc.
Mr. and Mrs. David Anderson
Ms. Laura Andrew
Ms. Joyce E. Andrews
Andy's Charitable Foundation
Anfield Consulting Group
Anonymous (8)
Arizona Chemical Company
Mr. and Mrs. Dean Armitage
Arnold, Matheny & Eagan, P.A.
Arroyo & Talbert, P.A.
Art...The First Language
Ascension Health Ministry Service
Center

Ms. Eleni Aspras
Mr. and Mrs. Carly Asse
AutoNation Ford Sanford
Rose Marie Bagwell and Bill Blanton
Mr. and Mrs. David A. Baker
Ms. Michele Balcom
Baldwin Krystyn Sherman Partners
The Balmoral Group
Richard and Carolyn Baney
Ms. Ashley A. Banks
Barbizon USA, LLC
Mr. and Mrs. Glenn Barker
Dr. Craig and Mrs. Sandra Barkley
The C. Warren Barry Foundation
Bascom Communications &
Consulting, LLC
John E. and Nellie J. Bastien
Memorial Foundation
Ms. Rachael Bauman
Bay Arts Alliance
Bay Point Wyndham Resorts
BB&T Wealth Management
Beach Club Investments, LLC
Beachside Physical Therapy
Mrs. Rosa M. Beckett
Mr. Keith Beears and
Mrs. Vikki Hodgkins
Julia B. Beensen Trust
The James E. and Constance L. Bell
Foundation
James Ford Bell Foundation
Ms. Beverly H. Benjamin
Benson's Heating & Air
Conditioning, Inc.

Mr. Kent N. Berry and
Ms. Alexandra A. Daniels
Best Buy Co., Inc.
Bethune-Cookman University
Mr. William D. Biggs, Sr.
BIMDA (Brevard Indo-American
Medical Dental Association)
Mr. and Mrs. Kevin Bing
Black Cypress Advisors, LLC
Mr. and Mrs. Carly Asse
Mr. and Mrs. Jim Blech
Mr. Stephen G. Blume and
Ms. Jennifer L. Leavengood
Boatyard
Mr. John Bohne
Bouchard Insurance
Mrs. Claire O. Bowen
Mr. Christopher and
Mrs. Maja Sander Bowler
Ann and Buzz Boyd
Mr. and Mrs. Charles Boyd
Mr. Jack Boyle
Branch Banking and Trust -
Colony Plaza
Mr. Ivan Bravo
The Brees Dream Foundation
Daniel J. Brennan, D.M.D., MAGD
Brevard County Bar Association, Inc.
Mr. and Mrs. Timothy B. Brilley
Brinker International
Ms. Catherine Ford Brister
Broad and Cassel
Mr. and Mrs. Brian P. Brown
Mr. and Mrs. Junious Brown, III

Mr. and Mrs. Walker M. Brown
Mr. Yale R. Brown
Brown and Brown Insurance of
Florida, Inc., Panama City
Mr. Matthew A. Bryan
Buchanan Ingersoll & Rooney/
Fowler White Boggs
Mr. and Mrs. David A. Bundy
Mr. and Mrs. Thomas Burnett
Ms. Jodi Burns
Ms. Alicia S. Burst
Mr. and Mrs. John B. Cantisano, III
The Cantonis Family
Cape Coral Kiwanis Foundation, Inc.
Capital City Bank
Capital City Bank Group Foundation
Capital City Trust Company
Capital Health Plan
Mrs. Kathryn Captain
Mr. and Mrs. Wilson Z. Carley, Jr.
Carpet One Floor & Home
Mr. and Mrs. Danny Carr
Mr. and Mrs. John S. Carr
Ms. Carolyn Carrano
Mr. and Mrs. Amaury Carrasco
Carroll and Company, CPAs
Mr. Philip Carter
Mr. Dominick Casale
Mr. and Mrs. Craig Castor
Centennial Bank
Century 21 Commander Realty, Inc.
Certus Knowledge, Inc.
Chandler Properties of Tallahassee
The Chang Group, Inc.

Auxiliary groups

We thank the following volunteer groups dedicated to helping children and families through their continuous support of Children's Home Society of Florida during the fiscal year from July 1, 2013, through June 30, 2014.

Children's Home Society Adoptions Auxiliary - North Central
Children's Home Society of Florida, Gainesville Auxiliary - Mid-Florida
Children's Hope Alliance - Buckner
East Broward Auxiliary - Intercoastal
First Coast Alliance - Buckner
Friends of Joshua House Foundation, Inc. - Gulf Coast
Hacienda Women's Guild - Brevard
Michelin Golf Classic Committee - Gulf Coast
Silver Coffee Committee - Gulf Coast
Children's Home Society of Florida Teen Leadership Council -
North Central

The Haggard Law Firm
David C. Hammers
David and Cathy Hammond
Haynes, Peters & Bond Company, Inc.
The Edward P. and Juanita J. Henson
Foundation
Commissioner Sally A. Heyman
Holland & Knight, LLP
Mrs. Joan P. Hughes
Humana
The Martha Hunderlock Charitable
Fund of the Lutheran Community
Foundation
Ingham & Company
Mr. and Mrs. Dale F. Jacobs
JustGive.org
Mr. and Mrs. Roger E. Karmolinski
Katz Barron Squitro Faust
Mr. and Mrs. Brian Knight
KPMG, LLP
Dr. and Mrs. Kurt A. Krueger
Mr. and Mrs. Glenn Kustal
Leesfield Family Charitable
Foundation, Inc.

The Five Millers Family Foundation, Inc.
Mr. Kawika Mitchell
Moore Stephens Lovelace, PA.
Morgan Stanley Smith Barney
Glenn and Hazelle Paxson Morrison
Foundation
Mr. and Mrs. John R. Murphy
Nejame Law
New Traditions Bank
Mr. and Mrs. Peter A. Nori
Mr. Jack A. Olmstead
OppenheimerFunds, Inc.
Orlando City Soccer Foundation, Inc.
Orlando Health
Orlando Magic
Ormond Beach Lanes
Mr. and Mrs. Carlos Padiá
Mr. and Mrs. Dimitry Palceski
Pennington, PA.
Peoples First Insurance Services
Mrs. Larisa F. Perry
PGA TOUR Charities, Inc.
Mr. Laurence N. Phelps
Mr. and Mrs. Robert E. Pinder



*Deceased

Ms. Kelly Charles
 Dr. Silas J. Charles and Family
 Ms. Kamachie Chinapen
 Mr. Hernando E. Chong
 Mr. and Mrs. Tony Ciero
 Mr. and Mrs. Alfred Cinque
 City of Fort Pierce Florida
 CJJ Holdings, LLC
 Mr. and Mrs. Mark David Clark
 Clear Channel Communications
 Sidney and Alma Coates Trust
 Coleman, Yovanovich & Koester, P.A.
 Columbiettes of Martin Council #6241
 Combined Federal Campaign
 Bob and Amy Comesanas
 Community Bank & Trust of Florida
 Community Bank of Broward
 The Community Services
 Foundation of Broward County
 Concordia Behavioral Health
 Condoliated-Tomoka Land Co.
 Connell & Manziak Realty, Inc.
 Mr. and Mrs. Charles Cook
 Mr. J. M. Cook
 Mr. S. Michael and
 Mrs. Kimberly Cook
 Mr. James M. Cooper
 Coral Reef Animal Hospital
 CORE Investment Management, LLC
 Cornerstone Tax Group, LLC
 Mr. Ben Cornish
 Dr. and Mrs. Cory Couch
 Judge Brad Thomas and
 Ms. Susan Cox
 Mr. Brian Crawford
 Mr. Kevin W. Crews
 Crispin Porter + Bogusky
 Mr. and Mrs. Robert Croce
 Crystal Lake Home Owners
 Association
 CuddleCube.com
 Mr. and Mrs. Ron Czamey
 Mr. and Mrs. Robert Daley
 Mr. and Mrs. Matt Dannheisser
 Daoud's Fine Jewelry
 Bro and Dede D'Arcy
 Mr. Kevin Davidson
 Mr. and Mrs. Don Davis
 Mr. Steven S. Davis
 Ned and Sherry Ann Dayton
 Daytona Beverages, LLC
 Daytona International Speedway
 Dean, Ringers, Morgan & Lawton, P.A.
 Mr. John H. Dearhammer
 DeBardleben Foundation
 Mr. Thomas J. DeFeo
 Mr. and Mrs. Pedro De Figueiredo
 Mr. James DeLoach
 Mr. and Mrs. Dennis A. DeLorenzo
 Mr. and Mrs. Stephen H. Demme
 Charles H. Denny, III Charitable Trust
 Ms. Pamela S. Derringer
 Dr. and Mrs. Anil Dhople and Family
 Dr. Michael Diaz
 Mr. Florent Diep

Disney EARS to You Fund
 Ms. Gayle Dixon
 Diver's Den
 DMEautomotive
 Mr. and Mrs. Arthur D. Dobosiewicz
 Mr. and Mrs. Leonard Dombrowski, Jr.
 Mrs. Avery Donaudy
 Ms. Paige Donnelley
 Mr. and Mrs. Harold Downing
 Ms. Debra L. Dreyer
 Drummond Management
 Mr. and Mrs. George A. Dunn, Jr.
 Ms. Kirsten L. Dunton and
 Mr. John Hugill
 Mrs. Karen Durden
 Mr. and Mrs. George Dutkewych
 Ms. Linda D. Dyess
 Earl Bacon Agency, Inc.
 Eastern Poultry Distributors, Inc.
 Mrs. Susan Eatwell
 Embry-Riddle Aeronautical
 University
 Mr. and Mrs. Brad R. Emmons
 Mr. and Mrs. William L. Ervin, Jr.
 Farah & Farah, P.A.
 FBMC Benefits Management, Inc.

Florida Power & Light
 Florida State Employees' Charitable
 Campaign
 Florida State University Credit Union
 Evelyn Foster
 Frank & Steins Eatery and Pub
 Dr. Jim and Mrs. Carol Free
 Representative Erik Fresen
 Friedman Financial Advisors, Inc.
 Drs. Reed and Kelli Gahagan
 Mrs. Jerry Galeana
 The Gantt Group
 Mr. and Mrs. Garrett M. Gardi
 E.T. Gardner Foundation
 Mr. Daryl Garis
 The Garner Foundation
 Gary Yeomans Ford
 Gator Exchange Club of Gainesville
 Mr. and Mrs. Thomas J. Gerard
 GFWC Florida District 6
 GFWC Gulf Coast Woman's Club
 GFWC Viera Woman's Club
 Gibraltar Private Bank & Trust
 Mr. and Mrs. Richard Ginder
 Mr. and Mrs. Tony Ginevra
 Mr. and Mrs. Edward J. Glatz

Mr. David W. Gruber
 Mr. and Mrs. Fred Guittion
 Gulf Coast Regional Medical Center
 GulfWorld Marine Park
 David B. Haber, P.A.
 Mr. Charles J. Hall
 Ms. Michelle L. Hamby
 HandsOn Jacksonville
 The Hayslett Team - REMAX
 Ms. Leslie A. Hazenfield
 HB Church St., LLC
 HCA Caring for the Community
 HCA Foundation
 Health Foundation of South Florida, Inc.
 HealthSouth
 The Hear Care Center
 Heritage Capital Group, Inc.
 Mr. and Mrs. Larry Hershfield
 Hess Entertainment Group, LLC
 Rochelle and David A. Hirsch
 Foundation, Inc.
 Mr. and Mrs. Ashley D. Hoffman
 Ms. Monica Holtgrewe
 Holy Land Stone Company
 Hope Presbyterian Church at
 Lake Nona
 Horizon Lines, LLC
 Ms. Tara Hormell
 Mr. Richard Horowitz and
 Ms. Diana Downs
 Mr. Michael Howick
 Hufty Foundation
 The Huisking Foundation, Inc.
 Mr. and Mrs. James L. Hutchings
 IBM Employee Services Center
 Mr. Charles Idelson
 Ms. Sally B. Iglehart
 In Florida Properties, Inc.
 Information Systems of Florida, Inc.
 Institute of Real Estate Management
 Interline Brands
 The International Society of
 Palm Beach
 Investors Security Trust
 Mr. and Mrs. Robert E. Jacoby
 Mr. and Mrs. Kenneth Johnson
 Mr. and Mrs. Russell W. Jones
 Joni Zwick, P.A.
 JP Morgan Chase Foundation
 Matching Gifts Program
 JVD Construction
 Ms. Janice M. Kane and
 Mr. Richard Solomon
 Mr. and Mrs. Steve Kapustka
 Mrs. Helene Karp
 Ms. Shelley S. Katz
 Deborah L. Kearney, D.D.S.
 Ethel Kennedy Foundation
 The Durden Foundation, Inc.
 Mr. Jonathan Kepple
 Mr. Joseph L. Kerr, Jr. and
 Ms. Karen Godley
 Mr. Randy Keys
 Mr. and Mrs. Jerome D. King
 Mr. and Mrs. Dale Kinsell

Mr. Thomas L. Kirk
 Anna M. and James L. Kirk
 Foundation, Inc.
 Dr. and Mrs. Kenneth W. Knopf
 Kohl's
 Ms. Donna Kuldau
 Mr. Brent Lahaye
 The Lambert Family Foundation
 Mr. and Mrs. Sidney W. Lassen
 Mr. Robert J. Leader
 Lee Foundation
 Ms. Laurrie Leonard
 Ms. Bonnie E. Levengood
 Mr. and Mrs. H. Irwin Levy
 Lewis, Birch & Ricardo, LLC
 Dennis Lichorwic, D.M.D.
 Mr. Alan Lieberman
 Ms. Colleen Liebert
 Lincoln Financial Group
 Mary J. Lindsley Fund
 Mr. and Mrs. Nelson Llanes
 Mr. and Mrs. Warren W. Lovell, III
 Ms. Megan Lowry
 Mr. David MacEachern
 The David and Sondra Mack
 Foundation, Inc.
 Maclay School
 Mr. Julian MacQueen
 Majesty Holding Properties, LLC
 Mr. and Mrs. Paul Manley
 Ms. Altha Manning
 Mr. and Mrs. Jeffrey A. Marcos
 Mr. and Mrs. Louai Mardini
 Ms. Misty Margrave
 Dr. Randolph E. Margrave
 Ms. Jeanne V. Maron and
 Mr. Howard A. Caplan
 Mr. and Mrs. George Marshall
 Mr. Tristan Martin
 Mr. and Mrs. Greg F. Martinez
 Mrs. Keersten Martinez
 Bob and Lori Massey
 Mr. and Mrs. Robert T. Matschner
 Maxine's Salon and Spa
 Mr. and Mrs. Thomas S. McCaleb
 Mr. and Mrs. Joseph McCarthy
 Mrs. Luba McDonald
 Mr. Christopher McGinley
 Mr. and Mrs. George McInnis
 McLaughlin Family Fund, Inc.
 John J. McLean Endowment
 McMahon - Hadder Insurance, Inc.
 Mr. and Mrs. William McMunn
 McNulty Charitable Foundation, Inc.
 Mrs. Vicky McVay and
 Dr. Fenton Froom
 Medical Center Clinic
 Mr. and Mrs. Timothy J. Meenan
 Memorial Health Systems
 Foundation, Inc.
 Mercedes-Benz of Cutler Bay
 Mercedes-Benz of North Orlando
 Mr. Lee F. Mercier
 Meridian Management Corporation
 Merrill Lynch Trust Company

MetLife
 Miami Association of Realtors, Inc.
 Michael's Consulting Group, Inc.
 Mr. Richard Milam
 Teresa Miles and Donald Sheppard
 Ms. Cheryl A. Miller
 Mr. Steve Miller
 Mr. and Mrs. Larry C. Mingledorff
 Dr. and Mrs. Paul Minotty
 Ms. Jaana T. Moio and
 Mr. Thomas Bennett
 Ms. Noelle Montalvo
 Mrs. Betty J. Moore
 Mr. Frank L. Morsani
 Ms. Virginia L. Mortara
 Mr. and Mrs. Robert M. Moser
 Mr. and Mrs. Patrick Murray
 Naples Hotel Group
 Mr. and Mrs. Thomas Nelson
 Nelson Mullins Riley &
 Scarborough, LLP
 The Newport Group
 Mr. and Mrs. David F. Nocar
 Noodles Panini Restaurant
 Mr. and Mrs. W. J. Noonan, III
 North Florida Sales
 Notre Dame Club of Greater
 Orlando
 Mr. and Mrs. William C. Nutting
 Mr. and Mrs. Nels P. Offerdahl
 Dr. and Mrs. Richard W. Oliver, Jr.
 Mr. and Mrs. Alton J. O'Neil
 Orlando Drum & Container
 Corporation
 Mr. and Mrs. Thomas B. Owens
 Owl Automotive Group, Inc.
 Mr. Jerry Pare
 Mr. David Parsons
 PCB Rotarians at Work, Inc.
 Mr. David A. Pearl, Esq.
 Mr. Michael A. Pecchio
 Mr. and Mrs. Robert Peters
 Ms. Wendi W. Peterson
 Dr. and Mrs. William Petty
 Mr. and Mrs. John E. Pew
 Picard-Dannheisser Family
 Foundation
 Mr. Chris Pickering
 Pilot Corporation of America
 Pioneer Linens
 Mr. and Mrs. Jack L. Platt, Esq.
 Ms. Marilyn B. Polite
 Porsche of Orlando
 Mr. and Mrs. Daniel Porter
 Prestige Cruise Holdings, Inc.
 Mr. and Mrs. Paul R. Price
 Employees of Publix Super
 Markets, Inc.
 Mr. and Mrs. Michael R. Pullen
 Qualcomm Foundation
 Mr. Richard Raffo
 Dr. Ed Ranelli
 Ron and Lois Rawson
 Mr. Charles E. Ray
 Red Hills Powersports

United Way support

Designated support from our friends flows to Children's Home Society of Florida through several United Ways to help us provide necessary services to Florida's children and families. Thank you for directing your contributions to benefit the children served by our organization during the fiscal year from July 1, 2013, through June 30, 2014.

- Heart of Florida United Way, Inc.
- Town of Palm Beach United Way, Inc.
- United Way of the Big Bend
- United Way of Brevard
- United Way of Broward County
- United Way of Central and Northeastern Connecticut
- United Way of Central Florida, Inc.
- United Way of Citrus County
- United Way of Collier County, Inc.
- United Way of Escambia County, Inc.
- United Way of Greater Atlanta
- United Way of Greater Cincinnati
- United Way of Greater Kansas City
- United Way of Greater Philadelphia and Southern New Jersey
- United Way of Greater Portland
- United Way of Indian River County
- United Way of Lake & Sumter Counties
- United Way of Lee, Hendry, Glades, and
Okeechobee Counties
- United Way of Marion County, Inc.
- United Way of Martin County
- United Way of Metropolitan Chicago
- United Way of Metropolitan Dallas, Inc.
- United Way of Miami-Dade County
- United Way of New York City
- United Way of North Central Florida
- United Way of Northeast Florida
- United Way of Northwest Florida, Inc.
- United Way of Okaloosa-Walton Counties, Inc.
- United Way of Okeechobee County, Inc.
- United Way of Palm Beach County, Inc.
- United Way of St. Johns County, Inc.
- United Way of St. Lucie County
- United Way of Suwannee Valley, Inc.
- United Way of Volusia-Flagler Counties, Inc.
- United Way Suncoast
- United Ways of the Greater Tri-State Area

Helping hands

Our compassionate, dedicated volunteers donate valuable time and talent to help us provide quality care and services throughout Florida. Individuals and groups help youth with homework, mentor teens and young parents, organize and support fundraising events, participate in board meetings and strategic planning sessions, solicit contributions, and advocate to elected officials for funding and support.

Volunteers..... 5,627
Total hours..... 97,664
Total dollar value* of volunteer time..... \$2,202,323

**Estimated value of volunteer time is based on figures from independentsector.org*

Luke and Nancy Fichthorn
 Ms. Renée R. Finley
 First Call for Help of Broward, Inc.
 First Florida Credit Union
 First Presbyterian Church of Sebring
 Mr. and Mrs. Michael W. Fisher
 Fisher, Tousey, Leas & Ball
 Flaharty Asset Management
 Flamingo Lake RV Resort, Inc.
 Mr. and Mrs. Karl F. Flammer
 Ms. Tara Flank
 Mr. and Mrs. John Fleming
 Mr. and Mrs. Trevor Fletcher
 Floormasters
 Florida Combined Life
 Florida Farm Bureau Casualty
 Insurance Company

Ms. Karen Godley and
 Mr. Joseph L. Kerr, Jr.
 Gold Coast Landscape
 Management, Inc.
 Mr. Alex Goldstein
 Ms. Barbara Gonzalez
 Mr. P.J. Goodwin
 Dr. and Mrs. Robert Gordon
 Graff Diamonds
 Graham Holdings Company
 Matching Gifts Program
 Ms. Heather Collins Grattan
 The Greene Hazel Community
 Foundation
 Amber and Craig Grider
 Mr. and Mrs. James R. Griffiths
 Mr. and Mrs. Terry Gross

Ms. Tina Regan
Regions Bank
Reids Court
Renaissance Charitable Foundation, Inc.
Ms. Mary Renner
Rexel, Inc.
Ms. Mary Anne Richter and
Tim Murphy
Ring Power Corporation
Mr. and Mrs. John J. Rivera
Rizzetta & Company, Inc.
Mr. and Mrs. William K. Robertson
Mr. and Mrs. M. Joseph Robinson
Mr. and Mrs. William D. Rollnick
Mr. and Mrs. Bradley Romack
Mr. Henry Roman
Jim and Jeri Ronaldson
Mr. and Mrs. William Roosevelt
Mr. and Mrs. Wilbur Ross, Jr.
Rotary Club of Daytona Beach, Inc.
Rotary Club of The Villages
Rotary Club of The Villages
Foundation, Inc.
Rotary Club of Winter Springs
Dr. and Mrs. Charles A. Roth
Jerry and Susan Roth
Ms. Cheryl Rowswell

The Royal Palms of St. Lucie Fund
Development
Mr. and Mrs. Howard M. Rudolph
Mr. Barney S. Rush and
Dr. Marjorie D. Shaw
Ms. Tricia Saad
Sachs Media Group, Inc.
Paul and Teri Sallwasser
Mr. and Mrs. Richard S. Sanders
Fred and Virginia Sandor
Mr. John Sansone and
Mrs. Becker Holland
Mr. and Mrs. Lawrence R. Savage
Sawgrass Asset Management, LLC
The John F. Scarpa Foundation
Scherer Construction of North
Florida, LLC
Schmidt Properties, Inc.
Mr. Nick Schmidt
Ms. Janet Schwartz
Ms. Clarice M. Secrest
Dr. Robert and Mrs. Maria Seelman
Greg and Valerie Seidel
Shacter Family Foundation, Inc.
Mr. and Mrs. David Shacter
Mr. Syed Shariff
Mr. Jalal Shehadeh

Shell, Fleming, Davis & Menge, P.A.
Mr. Michael J. Sherwood
Shook, Hardy & Bacon, LLP
Showmen's Association Charities
Corporation
Silicon Valley Community Foundation
Simply Storage Management, LLC
Mr. Charles Sloan
Mr. Craig Smith
Mr. and Mrs. Dennis Smith
Mr. and Mrs. Nevens C. Smith, Jr.
Smith, Bryan & Myers, Inc.
Society of Incentive & Travel Executives
Society of the Debutante Charity
Cotillion
Mr. Richard Solomon and
Ms. Janice M. Kane
Drs. Michael and Navreet Somai
Dr. and Mrs. George C. Sonnichsen
Sons of Confederate Veterans,
Kirby-Smith Camp #1209
Sons of God Motorcycle Ministry,
C.E.C. Chapter, Inc.
Mr. James Southerland, Jr.
Southern Orthopedic Specialists, P.A.
Southside Business Men's Club
Space Coast Vettes
Mr. and Mrs. Richard H. Spadoni
St. Cloud Citizens Foundation
St. Lucie Draft House and
Sports Bar, Inc.
Mr. and Mrs. Steve Stack
Mr. and Mrs. Paul F. Stagner
Stearns Weaver Miller Weissler
Alhadeff & Sitterson, P.A.
Ms. Edith Steele
Ms. Betty L. Steen-Clarke
Mr. and Mrs. Douglass Stewart
Ms. Tara Stewart
Mr. and Mrs. Dennis J. Straw
Ms. Suzanne Stuart
Students Helping Achieve
Philanthropic Excellence, Inc.
Studer Charitable Giving
Studer Foundation, Inc.
Mr. and Mrs. Ben Subin
Subu Crossfit, Inc.
Summit Wealth Partners, Inc.
SumTotal Systems, Inc.
Sun Marketing Group, Inc.
Superior Painting of Tallahassee, Inc.
Mr. and Mrs. Bruce Sutherland
Ms. Andry E. Sweet and
Mr. John B. Block
Mr. and Mrs. Robert M. Sweeting
Mr. Eric Swinarki
Swisher International, Inc.
Syniverse Technologies
Tallahassee Neurological Clinic, P.A.
Tallahassee Orthopedic Clinic
Tallahassee Pediatrics
Tallahassee Surgical Associates
Mr. and Mrs. Joseph M. Tanenbaum
Taylor Elevator Corp.
Mr. and Mrs. Andrew R. Taylor

Ms. Beverly B. Taylor
TD Ameritrade
Mr. and Mrs. Wade Teague
Mr. and Mrs. Jeffrey Teacu
Telesco Family Foundation
Mrs. Amy L. Thomas
Mr. and Mrs. John Thompson, Jr.
Mr. Nathan A. Thornton
Mr. and Mrs. Clayton M. Timmons
Mr. Bradley D. Towle
Trademark Properties, Inc.
Dr. and Mrs. Josh Trafton
Trailer Bridge, Inc.
Tremron Group
Tri-County Optimist Club
Leanne Freas Trout Foundation, Inc.
Dr. and Mrs. Thomas Truman
University of Miami, Miller School
of Medicine
Ms. Kelly Vaandering
Mr. Chad Van Horn
Van Voorhis Family Foundation
Vancore Jones Communications, Inc.
Ms. Maria Grisel Vega
Mr. Christopher Verlander
Vero Insurance
Mr. and Mrs. Robert Vezina
VJRA, LLC
VM Flowers, Inc.
Mr. Glenn M. Volence
Mr. and Mrs. K. Grahame Walker
Mr. Stephen Walker and
Ms. Karen Hooks
Mr. and Mrs. Bruce C. Wardell
Mr. and Mrs. Randy Ware
Mr. William K. Warren, Jr.
The Wasie Foundation
Mr. and Mrs. George W. Weaver
Mr. and Mrs. James Weibert
Ms. Virginia Weeks and
Mr. William Rayner
Ms. Linda Weitz
Wells Fargo Home Mortgage
Ms. Liz Wennerstrom
Ms. Nancy Wheeler
Mr. and Mrs. Douglas Whitaker
White Orchid Spa
Ms. Judith Whittaker
Mr. Frank Whitton
Whole Foods Market
Mr. and Mrs. Clarence O. Wilkerson, Jr.
Mr. Andrew Williams
Mr. and Mrs. George D. Williams
Wilmington Trust
Edwin Willinger Charitable Trust
Wisteria Foundation
Mr. T. Lynn Wollschlager
Mr. and Mrs. Leslie J. Wood
Mr. and Mrs. Orator Woodward
World Golf Village Renaissance
Resort
Youth and Family Foundation of
Florida, Inc.
The Donald and Barbara Zucker
Family Foundation

\$5,000 and above gift-in-kind contributors

We thank the following individuals, organizations, corporations and foundations for contributing items or services valued by the donor at \$5,000 or greater during the fiscal year from July 1, 2013, through June 30, 2014. We appreciate your desire to help children and families by supporting our critical programs and services.

93.7 K-Country and 92.5 WIND-FM
ABC Fine Wine & Spirits, Inc.
Employees of Adecco North America
Anonymous
Aspen Insurance
The Avenues Mall
Beson4 Media Group, Inc.
Mrs. Carol Bosshardt and
Mr. Mel Clark
Bradford Renaissance Portraits Corp.
Bright House Networks
CBRE, Inc.
CFL Pizza Hut
Christ The King Catholic Church
City Kia of Greater Orlando
Clear Channel
Cohen & Montini Orthodontics
Community Based Care of
Central Florida
The Coordinator, Inc./Tim Webber
Employees of Crowley Maritime
Corporation
Emerald Coast Women's Club
Engineering Services Contract

Mr. Jeffrey Faine
First Coast Apartment Association
Fraternal Order of Police
Gainesville Restoration &
Remodeling, Inc.
Gator Moving & Storage Co.
Employees of GE Energy
Ms. Pamela L. Gerrity
GFWC Florida for Hacienda
Girls Ranch
Giggle Magazine
Global Directories, Inc.
Global Wholesale NBTY
Hair Cuttery - The Beauty of Giving
Hartstrings
Hasty's Communication
Heart of Florida United Way, Inc.
Hemming Plaza Jewelers
Hope Center for Teens, Inc.
Ideal Image
Jacksonville Magazine
Jacksonville Sheriff's Correctional
Officers
K.I.D.S. / Fashion Delivers, Inc.

Ms. Cynde Kerber
Kiwanis Clubs - Division 9
Kramer Portraits New York
LAE Beauty Tanning & Medispa
Liquid Creative Studio
Local T-Shirts, Inc.
Magic Broadcasting
Marc Radio Group, LLC
Marion County Public Schools
Ms. Laura Marsh
Maxine's Salon and Spa
Mrs. Vicky McVay and
Dr. Fenton Froom
Employees of Merrill Lynch
Mike Powell & Associates
North Florida Woman Care
Northrop Grumman
Owl Automotive Group, Inc.
Panera Bread Holiday Helpers
Dr. Kathy D. Pearce
Pensacola Quilters' Guild
Mrs. Kirsten Pollex
The Ponte Vedra Recorder
Powell Radio Group

Mr. Mike T. Powell
Ms. Mary Anne Richter and
Mr. Tim Murphy
Rowland Publishing, Inc.
RTI Surgical, Inc.
Mrs. Celeste Rubanick
Salon 5402
SCB Media Group/Space Coast
Living
Mr. and Mrs. Karl M. Schutzmann
SeaWorld Adventure Parks
Employees of Select Portfolio
Servicing
Silver City Partners, Ltd.
Southern Wine & Spirits
Sports Marketing
Springstead High School
St. Joan of Arc Catholic Church
Sunglass World
Tioga Dental Associates
The Villages Woodworkers Club
Walt Disney World Resort
WEJZ Lite 96.1
WJXT-TV Channel 4



Tribute Society

Endowed funds at the Children's Home Society of Florida Foundation greatly support the fiscal needs of Children's Home Society of Florida, allowing our dedicated staff to directly serve children and families currently in our care. Additionally, these valuable funds provide necessary resources to secure the future of Children's Home Society of Florida. Gifts of any amount are encouraged and greatly appreciated, and named endowments may be created with a minimum gift of \$10,000. We sincerely thank our friends who have established the following named endowments through 2014.

Alachua County Endowment Fund
 Thomas R. Andrews Endowment
 Tracey Bagwell Endowment
 Robert F. and Grace A. Bartlett Endowment
 John W. Bates and Curtis C. Cook Memorial
 Bay County Kids Endowment
 The Bill Bigby Family Endowment
 Bissell Endowment
 Blalock Trust
 Vivian Locke-Lewis Blue Memorial
 Robert E. Brand Endowment
 Dr. Clarice Brantley Memorial Endowment
 The Josephine H. and Jacob F. Bryan, III, Endowment
 Thad and Loca Lee Buckner Endowment
 Buckner Building Maintenance Endowment
 David A. and Charlene Bundy and Virginia Rell Scholarship Fund
 Clarence Mank Camp, II, Memorial Endowment
 Frances P. Chalmers Memorial
 Julie Griffin Chapman Endowment
 Charity, Inc., Medical Endowment
 Children's Causes in Haiti
 Childress Foundation Fund
 The Francis and Miranda Childress Second Century Endowment Fund
 Lewis S. and Frances Childress Lee Endowment
 Children's Home Society Auxiliary of Central Florida Fund
 William M. Courtney Endowment
 Mr. and Mrs. James A. Cranford Endowment
 Alan and Christine Curtis Endowment
 A.D. and Pauline Davis Endowment
 Tine W. Davis Family-WD Charities, Inc., Medical Endowment
 Alfred I. duPont Memorial Endowment
 Jessie Ball duPont Medical Endowment
 A. L. Ellis Fund For Homeless Children
 EllMar Foundation, Inc., Endowment
 Helen Ervin Adoptions Endowment
 Marcus C. Fagg Endowment

The Faine House Endowment
 Dr. J. Kirby Farrington Endowment
 Dr. Joseph and Eleanor H. Farrington Endowment
 Fisher/Lawton/Miller Endowment
 The Harry W. and Mildred F. Fogg Memorial Endowment
 The Shirley W. Francis Endowment
 Miriam Z. Garcia-Pedrosa Memorial
 Timothy B. Gaskin Family and Old Dominion Insurance Company Endowment
 William Thomas Gordon, Jr. Memorial Endowment
 The Grader Fund for Children
 Jay Graham Memorial Endowment
 The Causey and Mabel Green Memorial
 Greene-Hazel Community Foundation, Inc.
 Eleanor and Ben Hill Griffin, Jr., Endowment
 The Pat and Jim Griffiths Endowment
 Greater Miami Foundation Endowment
 The Candace and Leonard Haberman Endowment Fund
 Haden Fund for Homeless Children
 Hansen House Endowment
 Ned and Frances Gray Hinson Memorial Endowment
 Nan Page Hoopes Endowment
 Blodyn Lane Hossler Fund for Children's Emergency Services
 IHOP Combined Promotion Endowment
 International House of Pancakes Medical Fund Endowment
 Louise Jackson Training Fund
 Ernest Jenderko Endowment
 George W. Jenkins Endowment
 Elwin S. and Marie H. Jewett Memorial Endowment
 Mary Elizabeth (Betty) Gossett Jones & Clyde Curtis (Buddy) Jones Memorial Endowment
 KCSB Endowment
 William and Ida M. Knabb Endowment
 The Knight Foundation Endowment
 The C.L.C. Kraft Endowment
 Rudy A. and Peggy Kraft Endowment

Helen M. and Edward W. Lane Child Abuse Endowment
 Carmen Lew Langston Memorial Endowment
 Helen M. and Edward W. Lane Endowment
 Lauderhill Women's Club Medical Endowment
 Charles A. Lauffer Memorial Endowment
 Dr. Lawrence R. Leviton Memorial Endowment
 Lucy Fairfax Polk Mitchell Lyerly Memorial Endowment
 Marion County Road Builders Endowment
 Mr. and Mrs. John Wilkes McKay Endowment
 John J. McLean Endowment
 Frederick Stuart Metcalf Endowment
 Jean W. Meyers Endowment
 C. Scott Moore Endowment from William M. Moore, his proud father
 Charles and Johnnie Morris Endowment
 Mark and Ruth Munroe Memorial Endowment
 Mutual of America Endowment
 Eva and Shirley Narcisenfeld Endowment Fund
 National Foundation for Missing and Abused Children Endowment
 Pauline Nichols Endowment
 Ashley Offerdahl Scholarship Endowment
 Tim Panuska Memorial Endowment
 Peacock Foundation, Inc., Permanent Endowment Fund for Parenting Education
 THE PLAYERS Championship Endowment
 Putnam County Auxiliary Medical Endowment
 In Memory of Mr. Orvis Amos Rawson
 Rax Combined Promotion Endowment
 Rax Medical Endowment
 Olivia Tawney and Clifford B. Rosa Memorial

John A. and Betty L. Roschman Endowment
 Satterthwait-Edwards Memorial Endowment
 The George Schoenbacker Memorial Fund
 Elbert B. Shelfer, Jr., and Lucille P. Shelfer Memorial
 Judge Bryan Simpson Memorial
 Alford C. and Sylvia F. "Tibby" Sinclair Endowment
 Sovereign Order of St. John of Jerusalem
 The William Sottile, June Sottile, and Cynthia Sottile Wepsala Endowment Fund
 South Coastal Board Endowment in Memory of Frederick Stuart Metcalf
 Southwest Florida Community Foundation Endowment
 Electra Spillis Endowment
 James W. Spratt Memorial Endowment
 The Sudler Family Endowment
 Dorothy W. Swenson Memorial Endowment
 C. Herman and Mary Virginia Terry Endowment
 R. David Thomas Child Advocate of the Year Endowment
 Wayne Thomas Memorial
 George F. Valassis Endowment
 Paul Vandervelde Research Endowment
 Frank and Mary Visconti Endowment
 Miguel and Sonnia Viyella Endowment
 Michele Vogel Endowment
 The Sarah Moores Walker Endowment
 Watkins Christian Foundation Endowment
 Roger W. Webb Endowment
 Bob and Betty Weber Family Fund
 Howard and Ann Weisz Endowment
 Wendy's Combined Promotion Endowment
 Wendy's Fund for Children Endowment
 Wendy's Medical Endowment
 Kaitlyn Marie Winstel Endowment for Hope and Peace

Founders Society - Legacy Circle

We recognize as esteemed members of the Founders Society - Legacy Circle all individuals who notified us from the Children's Home Society of Florida Foundation's inception in 1990 through 2014 of an estate plan or deferred gift benefiting our organization. Many of our Founders Society - Legacy Circle members played a unique role in the development of the Children's Home Society of Florida Foundation, for which they will be forever honored.

Mr. Douglas Alexander, II
 Mrs. Margaret Allbritten
 Mr. Thomas R. Andrews
 Mr. Kenneth R. Atkins*
 Mrs. A.W. Avent*
 Mrs. Rita Barnett
 Mr. and Mrs. Robert F. Bartlett*
 Mr. Ray F. Basten
 Mr. J. Scott Baur
 Mrs. Doris I. Beedle
 Dr. Karen L. Borchers
 Mr. and Mrs. Gerald F. Bott
 Mr. and Mrs. Ronald M. Brown
 Mr. and Mrs. Ross R. Brown
 Ms. Liz Bruner
 Mr. Christian Edward Carlsen
 Mr. and Mrs. Harry B. Carson
 Mr. Benson Charles
 Mr.* and Mrs. Philip E. Clemente
 Ms. Linda Coffin
 Dr. and Mrs. Berwin A. Cole
 Mr. J. Benson "Ben" Coulter, Jr.
 Mr. William M. Courtney*
 Mrs. Mary H. Cross
 Mr. Alan Curtis
 Mrs. Louise E. DeTorres
 Mr. and Mrs. Russell P. Douse
 Mr. and Mrs. Edward C. Dweck
 Mr. A. L. Ellis*
 Mr. Michael W. Fisher
 Ms. Sandra L. Foote
 Miss Tiffany M. Gragg
 Ms. Michele M. Greene
 Carole and Frank J. Gulisano
 Mrs. Norma Lawson Hall
 Mr. Joe C. Hancock
 Ms. Carolyn B. Hayes*
 Mr. and Mrs. Curtiss R. Hill
 Mr. and Mrs. Thomas P. Howard
 Mr. Steven Jerauld
 Mr. and Mrs. R. Stuart Johnston
 Mrs. Caroline Johnston
 Mr. Edward L. Kelly
 Mr. and Mrs. Jack A. Kirschenbaum
 Mr. Philip J. Kolodziej
 Ms. Adele Kuhnle*
 Mrs. G. F. Lampkin*
 Mrs. Elsie G. Leviton*
 Mr. Larry Lowe
 Mrs. Lucy Fairfax Polk Mitchell Lyerly*

Mrs. Marie C. McDonald
 Rabbi and Mrs. Paul J. Menitoff
 Mr. and Mrs. William A. Mertins
 Mrs. Allison F. Metcalf-Wright
 Mrs. Jean W. Meyers*
 Ms. Lisbeth Michael
 Stephen and Kyle Miller
 Mr. Marcus Mills*
 Mr. and Mrs. Steve Mitchell
 Mr. William M. Moore
 Mr. Harry Morris, Jr.*
 Mr. and Mrs. John E. Morris, III
 Mrs. Pauline H. Nichols
 Mr. Millard J. Noblin
 Ms. Mary Ellen Ohser*
 Mr. Jack A. Olmstead
 Mr. and Mrs. John C. Patten, Jr.
 Ms. Dorothy R. Pearson

Mr. Cecil R. Phillips
 Mrs. Joan Phillips*
 Mr. and Mrs. William D. Preston
 Mr. and Mrs. Al P. Qualls
 Mr. and Mrs. C.J. Rader
 Mr. and Mrs. Dennis Ramella
 Mr. and Mrs. Curt S. Redden
 Mr. Stephen E. Ridgely
 Mr. Joseph Robinson
 Ms. Jennifer Rockett
 Mr. Max Roth
 Ms. Barbara T. Rowell
 Dr. Betty Rowen
 Mrs. Valerie Seidel
 Mrs. Martha Ann Sloan
 Mr. Harry B. Stafford
 Mr. and Mrs. Robert F. Steinlauf
 Mr. Thomas D. Stewart

Mrs. Adele I. Stone, Esq.
 Mr. and Mrs. Michael Tew
 Mrs. I. Lorraine Thomas
 Mr.* and Mrs.* George Touhy
 Mr.* and Mrs. Augustus Turnbull
 Mr. and Mrs. C. Michael Turner
 Ms. Michele Vogel
 Mr. Craig B. Ward*
 Mr. Henry T. Watkinson*
 Mr. Roger W. Webb
 Mr. and Mrs. Alan Wester
 Mr. Chris E. Williams
 Mrs. Ellie V. Wilson
 Ms. Penny Wilson
 Mrs. Esther Young*
 Ms. Leota E. Young-Gillette
 Mr. and Mrs. Stephen S. Zaricki
 Ms. Judith Zorn



Our Mission

Embracing Children. Inspiring Lives.

Our Vision

We envision Children's Home Society of Florida as a state and national leader in providing high-quality, community-based solutions to meet the needs of individuals, families and communities.

Our Values

Service

We are committed to the highest standards of quality in our programs and operations. We promote courtesy and dedication in our environment and utilize our quality improvement system to meet changing client and customer needs.

Stewardship

We will be diligent, responsible stewards of financial and human resources while maintaining resources to address the needs of our clients and constituents.

Integrity

We will maintain loyalty to our Mission and the highest standards of ethical and professional character within a supportive work environment. We work honorably and justly in all our work and service.

Respect

We will maintain respect for the worth and dignity of all persons with whom we work and serve. We are committed to teamwork, patience and congeniality that encourage inclusion from stakeholders and the people we serve.

Innovation

We provide leadership in the development of research-based, solution-driven programs for children and their families, and we encourage creative visionary ideas from our staff, our volunteers and our community.

Diversity

We will maintain employment policies and provide services that promote cultural diversity and capitalize on the strength of our geographic and programmatic diversity while pursuing our Mission.





Embracing Children.
Inspiring Lives.

Corporate Office
1485 South Semoran Boulevard
Building 6, Suite 1448
Winter Park, FL 32792

www.chsfl.org

Non-Profit Org.
US Postage
PAID
Orlando, FL
Permit No. 506

